

snom



M500 PRO SERIES



M500 PRO DECT WIRELESS FAMILY

A system that allows for flexible deployment anywhere within a business location



VTech & Snom Advantage



\$2.1 billion global company with more than 25 years in telecommunication, VTech acquired Snom in 2016



End-to-End Snom SIP-based solutions designed and manufactured in-house



Innovative, diverse & scalable SIP based portfolio

- Business Desk Phones
- DECT Mobility Solutions
- Conference Phones
- Broadcast



3-year warranty on Desk Phones, DECT Mobility and Conference Phones



North American based teams

- Engineering
- R&D
- Product
- Sales
- Marketing
- Technical Support



Extensive authorized network of distributors in North America



State-of-the-art North American distribution centers



M500 DECT – Bringing Key Systems into the 21ST Century



Patented DECT Busy Monitoring – BLF Over DECT



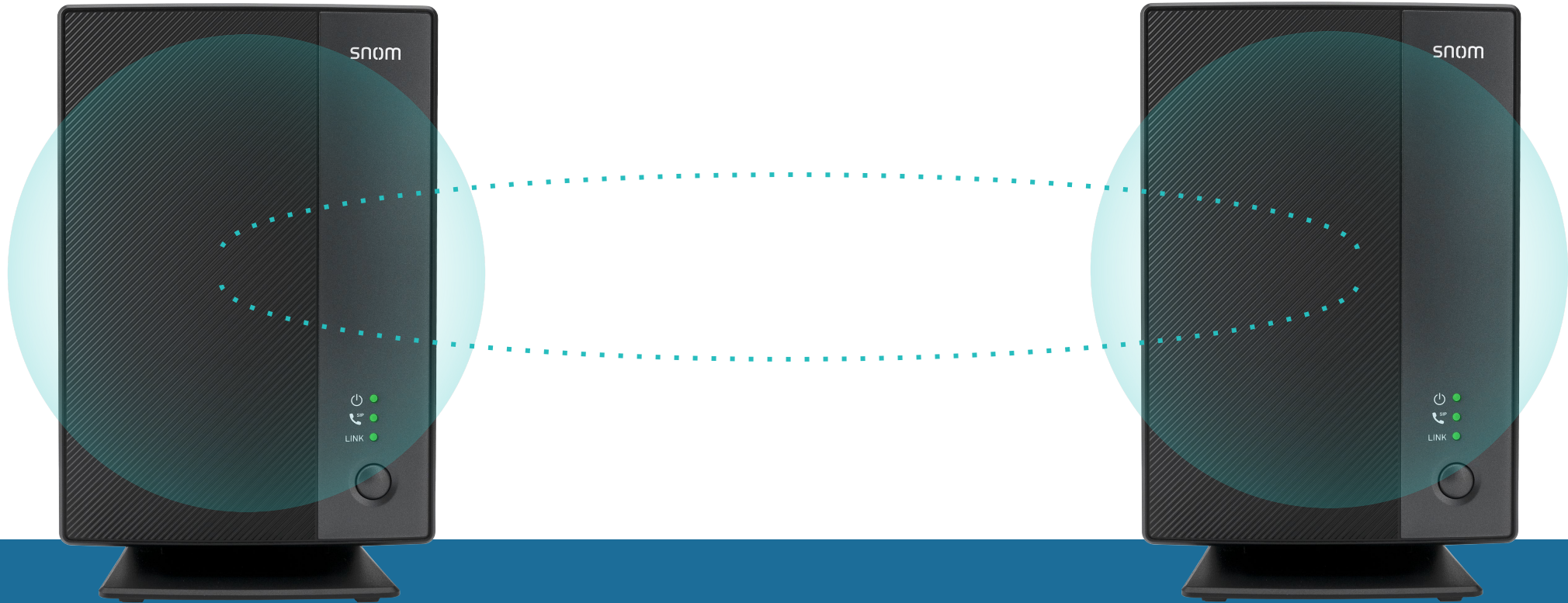
Patented DECT Busy Monitoring – BLF Over DECT



WIRELESS FREEDOM

The base station and cordless handsets offer flexibility and mobility throughout the office





INCREASE SCALABILITY

Expanded DECT range allows for increased call capacity by pairing two base stations

Deployment Example

M55 Handset

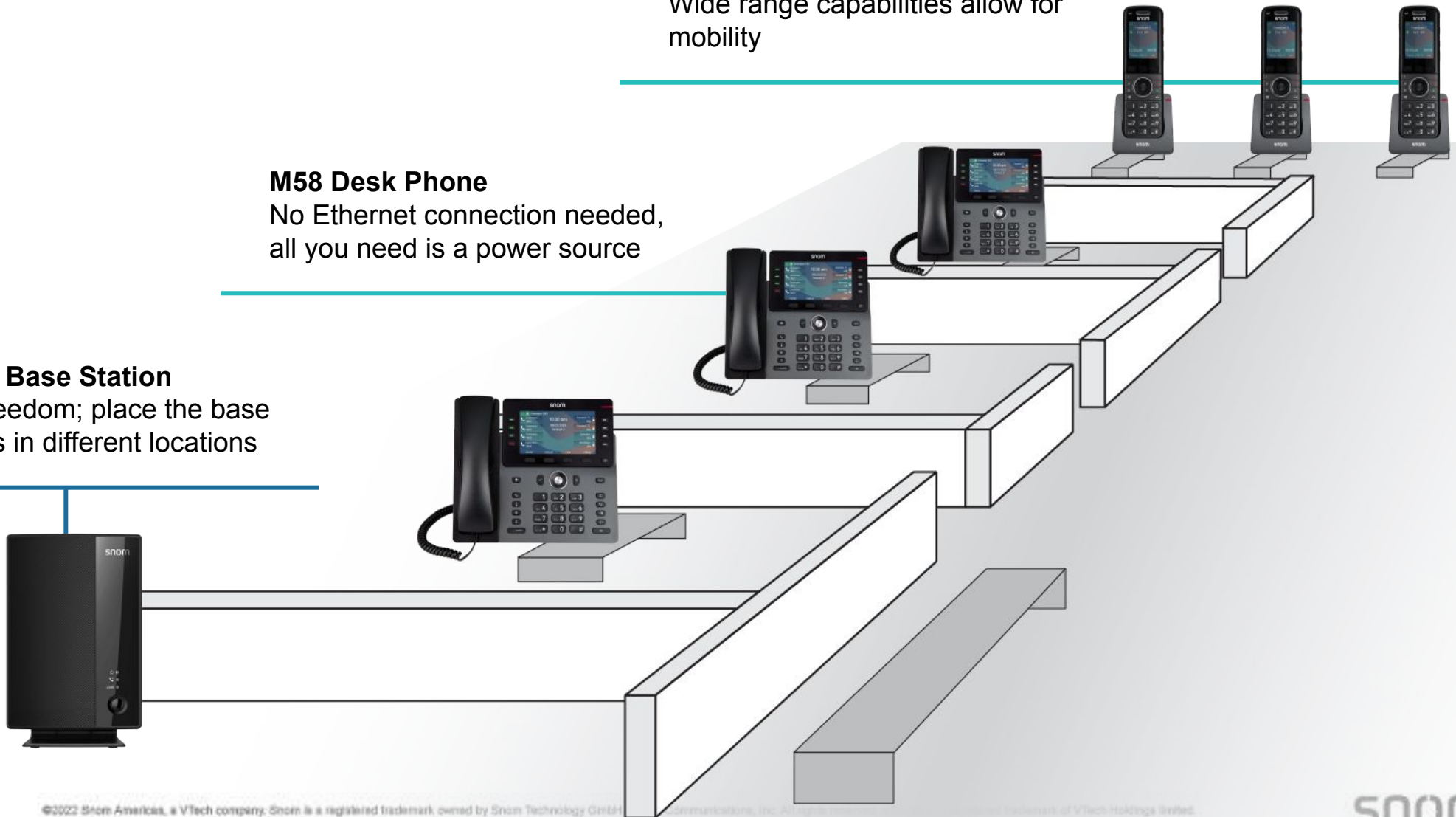
Wide range capabilities allow for mobility

M58 Desk Phone

No Ethernet connection needed, all you need is a power source

M500 PRO Base Station

Wireless freedom; place the base and phones in different locations



M500 PRO DECT Multicell Base Station



* Multi-cell capacity will increase over time via software update

M55 DECT Handset



M58 DECT Desk Phone



5" Color LCD



Ambient Light & Hook Switch Sensor



8 Programmable LED Backlit Line Keys



Integrated Bluetooth® for Headset Support



4 Soft Keys



Antibacterial Plastic



Full Desk Phone Dedicated Function Keys (Transfer, Intercom, Directory, etc.)



M500 PRO Wireless Family



M500 PRO DECT Base Station

- Dual PoE Ethernet Ports
- 4 Status LEDs
- 1 General Purpose Key
- 1 Reset Key
- USB: Future Expansion
- Wall Mountable
- Shared Call Emulation
- Single or Multicell Operation



M58 DECT Desk Phone

- 5" Color LCD
- 8 Programmable Dual Color LED Paperless Keys (Multiple Pages)
- Full Desk Phone Dedicated Function Keys (Transfer, Intercom, etc.)
- 4 Context Sensitive Soft Keys
- Integrated Bluetooth® for Headset Support
- Antibacterial Plastics
- Cordless Desk Phone



M55 DECT Handset

- 2.4" Color LCD
- 6 Dual Color LED Programmable Keys
- 3 Context Sensitive Soft Keys
- Page Key on Side
- Integrated Bluetooth® for Headset Support
- Antibacterial Plastics

M500 Web GUI

snom M500

STATUS SYSTEM

- SIP Account Management
- Base Preferences
- User Preferences
- Programmable Keys**
- Paging Configuration
- NETWORK CONTACTS SERVICING

M55 Programmable Keys

Select Handset:

Handset Name:

Default Account:

PFK

	Type	Account	Value	
PFK 1	<input type="text" value="KeyLine"/>	<input type="text" value="Account 1"/>	<input type="text" value="1"/>	
	<input type="text" value="KeyLine"/>	<input type="text" value="Account 1"/>	<input type="text" value="2"/>	PFK 2
PFK 3	<input type="text" value="KeyLine"/>	<input type="text" value="Account 1"/>	<input type="text" value="3"/>	
	<input type="text" value="KeyLine"/>	<input type="text" value="Account 1"/>	<input type="text" value="4"/>	PFK 4
PFK 5	<input type="text" value="Line"/>	<input type="text" value="Account 1"/>	<input type="text" value="4"/>	
	<input type="text" value="Dect Busy Monitoring"/>	<input type="text" value="Account 1"/>	<input type="text" value="1"/>	PFK 6

snom M500

STATUS SYSTEM

- SIP Account Management
- Base Preferences
- User Preferences
- Programmable Keys**
- Paging Configuration
- NETWORK CONTACTS SERVICING

M58 Programmable Keys

Select Handset:

Handset Name:

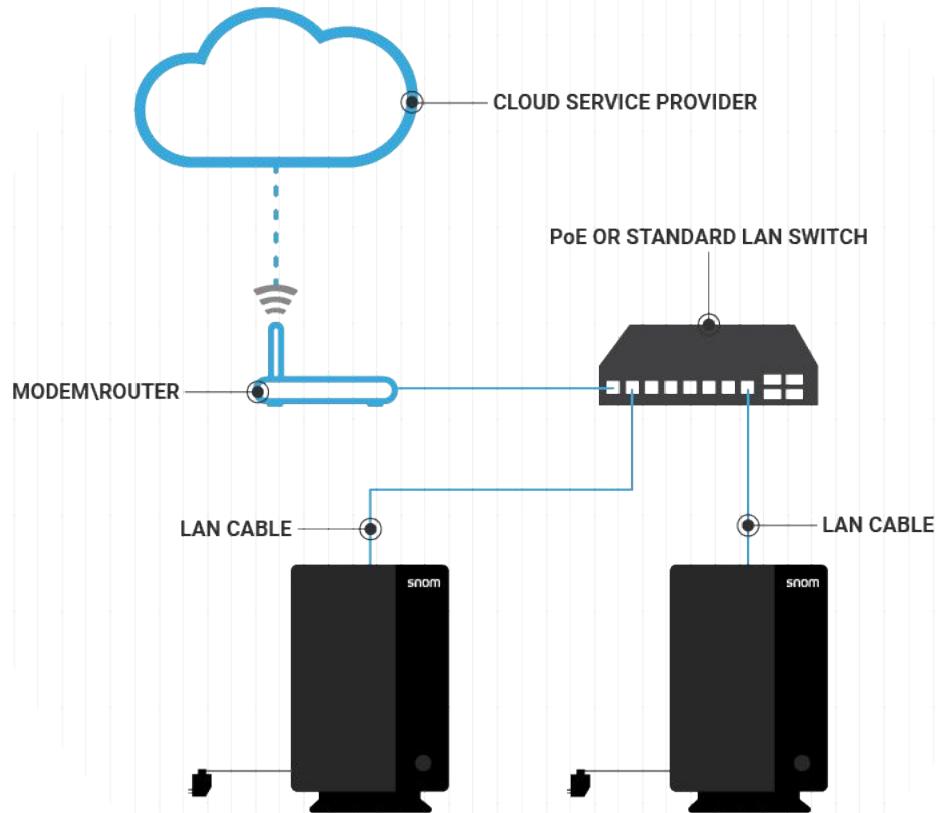
Default Account:

PFK

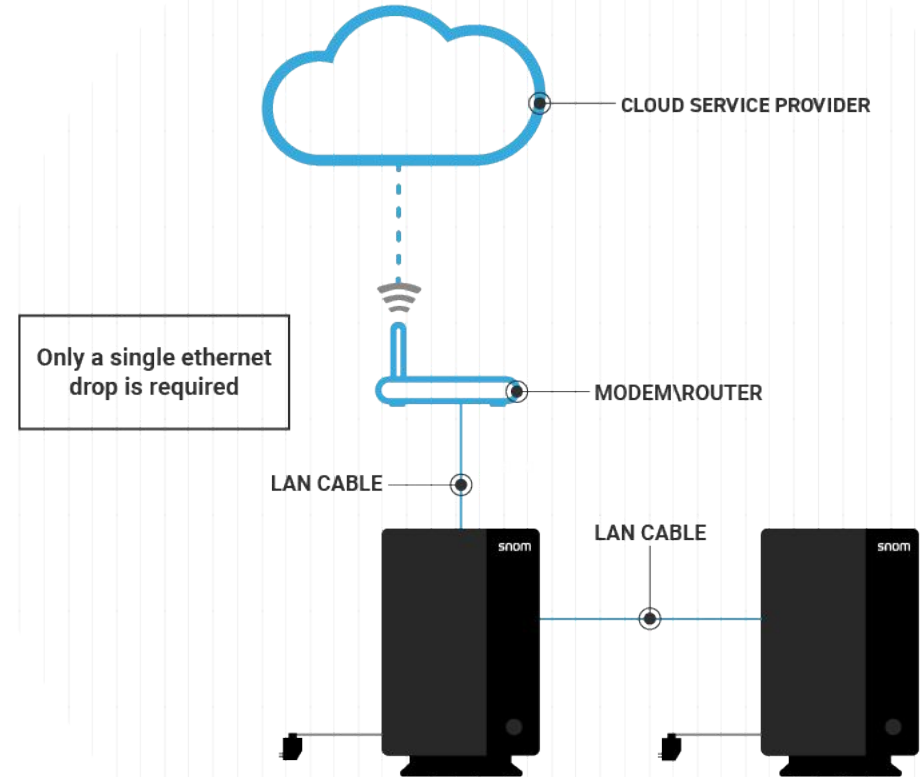
	Type	Account	Value	
PFK 1	<input type="text" value="KeyLine"/>	<input type="text" value="Account 1"/>	<input type="text" value="1"/>	
	<input type="text" value="Line"/>	<input type="text" value="Account 2"/>	<input type="text" value="1"/>	PFK 5
PFK 2	<input type="text" value="KeyLine"/>	<input type="text" value="Account 1"/>	<input type="text" value="2"/>	
	<input type="text" value="Line"/>	<input type="text" value="Account 2"/>	<input type="text" value="2"/>	PFK 6
PFK 3	<input type="text" value="KeyLine"/>	<input type="text" value="Account 1"/>	<input type="text" value="3"/>	
	<input type="text" value="Paging"/>	<input type="text" value="Account 1"/>	<input type="text" value="1"/>	PFK 7
PFK 4	<input type="text" value="KeyLine"/>	<input type="text" value="Account 1"/>	<input type="text" value="4"/>	
	<input type="text" value="Speed Dialing"/>	<input type="text" value="Account 1"/>	<input type="text" value="2086"/>	PFK 8

Deployment Capabilities

FACILITY WITH NETWORK INFRASTRUCTURE



FACILITY WITHOUT NETWORK INFRASTRUCTURE



High-Level Feature Comparison: M100 vs M500

Model	M100	M500	M500
Cell Type	Single	Single	Multi (Limited to 2 at launch, will expand in future)
Max. # Concurrent External Calls	6	8	Up to 16 (Future update to 48)
Max. # Total Internal & External Calls	6	8	48
Indoor Area Coverage	~50 m	~50 m	~100 m
Repeater Support	✓	No–bases must be added to extend range & capacity	No–bases must be added to extend range & capacity
Ethernet Port	1	2	2
PoE LAN Port	✓	✓	✓
# of Programmable Keys	4 on Desk Phone / 4 on Handset	8 on Desk Phone / 6 on Handset	8 on Desk Phone / 6 on Handset
Dual Color on Programmable Keys	Deskset only	All devices	All devices
Paperless UI on Deskset	—	✓	✓
User Interface Type	Mono – Character based	Color – Graphical	Color – Graphical
Context Sensitive Softkeys	No – Desk Phone / 2x Handset	4x Desk Phone / 3x Handset	4x Desk Phone / 3x Handset
Broadsoft Phonebook	—	✓	✓
Wireless Headset Support	—	Bluetooth®	Bluetooth®
Battery Operation	Desk Phone & Handset	Handset	Handset
DECT Diagnostic	✓	✓	✓
BLF Emulation	—	✓	✓
Call Recording (External USB Memory)	—	✓	✓
Single Firmware File for System	No – individual device firmware	✓	✓

Multicell Mode:
Enhanced capacity of system to expand the installation size within the small business market