



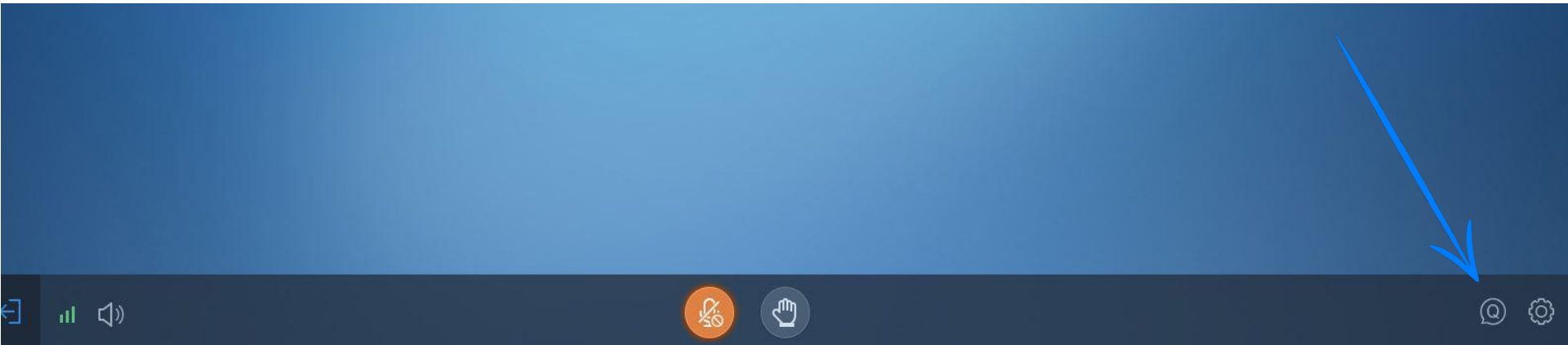
Let's Build a Strong Partnership

---

Presented By: Don Stefanie

**During the webinar please use the Q&A feature  
located in bottom right corner of your screen!**

**We will answer the questions at the end of the presentation  
Thank you!**



## We Are Ready to Help!



---

### Response Times: We are FAST!

- Tech support average of 14 minutes
- Sales response average of 9.3 minutes
- 99.9% of orders ship the same day

### 7 VoIP Experts

- 70 years of combined experience
-

# THE ALL-NEW POLY EDGE E SERIES

E100/200 SERIES

E300 SERIES

E400 SERIES

E500 SERIES

ACCESSORIES



RENDERING MAY DIFFER FROM ACTUAL PRODUCT

E100	E220	E300	E320	E350	E400	E450	E500	E550	E EM
------	------	------	------	------	------	------	------	------	------

**EDGE E MODEL  
NUMBERING TIP:**

Ends in “**00**” means “No Bluetooth®, No Wi-Fi; TAA compliance planned”

Ends in “**20**” means “has Bluetooth®”

Ends in “**50**” means “has both Bluetooth® and Wi-Fi”

## WHY EDGE E SERIES

**DESIGNED FOR FUTURE**  
Faster Processors | Appealing Design

NEW

Modern Poly  
Desk phone User  
Interface



Microban® Protection



Access to Help videos  
via QR Code



## RICH USER EXPERIENCE



Configurable UI to suit  
individual user needs



Assistive technology for  
user's w/disabilities



Personalized Line  
key assignment  
from the phone UI



Simple to use  
diagnostics for basic  
end-user  
troubleshooting



Improved directory  
management and search

## POLY EDGE E SERIES DESKTOP IP PHONES

**E100/200 SERIES**

**E300 SERIES**

**E400 SERIES**

**E500 SERIES**

**ACCESSORIES**



E100		E220		E300	E320	E350	E400	E450	E500	E550	E EM
2-lines (8 paginated)		4-lines (16 paginated)		8-lines (32 paginated)			8 + 6-lines (32+12 paginated) Support 1 EM		12 lines (48 paginated) Support up to 2 EM		22 lines (66 paginated per EM)
2.8" LCD		3.5" LCD		3.5" LCD			3.5" LCD & 2.4" 2nd LCD		5" LCD		5" LCD
NFC		NFC		NFC			NFC		NFC		
1 USB C		1 USB C		1 USB-C			1 USB-C		2 USB-C		
Bluetooth® 5		Bluetooth® 5		Bluetooth® 5		Bluetooth® 5		Bluetooth® 5		Bluetooth® 5	
		Wi-Fi (AC)		Wi-Fi (AC)			Wi-Fi (AC)		Wi-Fi (AC)		
\$219.95	\$259.95	\$299.95	\$339.95	\$379.95	\$379.95	\$459.95	\$419.95	\$499.95	\$309.95		

## EDGE E & HEADSET COMPATIBILITY

Edge E will support the same headsets currently supported on VVX and CCX devices.



### USB CONNECTED HEADSETS

- Blackwire Family
- Encore Pro USB Models
- Other Voyager Models



### SUPPORTED CALL CONTROL WITH CERTAIN POLY HEADSETS VIA BLUETOOTH®

- No dongle required for either Voyager Focus 2 or Voyager 4300



“Fast Pairing” via close proximity is not a feature supported at FA



Voyager 4300



Voyager Focus 2

## EDGE E FIT IN THE POLY DESKTOP VOICE PORTFOLIO



### CCX Series

#### Choose Poly CCX for:

- Touchscreen performance
- Hybrid working (USB mode)
- Native Microsoft Teams app
- Native Zoom Phone app
- Video calling (CCX 700)



### Edge E Series

#### Choose Poly Edge E for:

- Hybrid working use cases
- Integrated Bluetooth® (5 models)
  - Mobile phone and headset pairing
- Integrated Wi-Fi (3 models)
- NFC technology
- Accessibility features
- NoiseBlockAI technology
- Microban Antimicrobial protection



### VVX Business IP Phones

#### Choose Poly VVX for:

- Right features for the right price
- Wi-Fi supported w/ Wi-Fi adapter
- Microban Antimicrobial protection
- Widest Service Provider compatibility (currently)

No integrated Bluetooth®, No NoiseBlockAI technology



### Edge B Series

#### Choose Poly Edge B for:

- 2- and 4-line key models for price sensitive SMB and emerging markets
  - non-PoE model option (Edge B10) with power adapter
  - 3.5 mm headset support

Monochrome screen, No USB, No Microban, No Wi-Fi or Bluetooth® options



**POLY**

**INTEROPERABILITY & COMPATIBILITY**

<https://www.poly.com/us/en/solutions/platform/compatibility>

[Click here for the full comparison chart](#)

# GRANDSTREAM GWN SERIES WIFI SOLUTIONS

## 3 Free Management Options



1. GWN.Cloud
2. GWN Manager
3. Built-in Controller

## Easy Installation



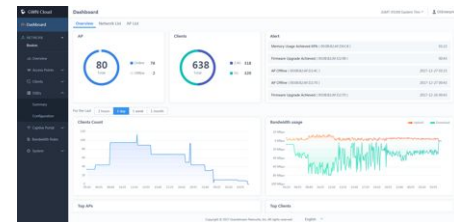
Just scan a barcode with the GWN.Cloud app

## Portfolio of APs & Routers



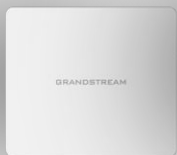
Full portfolio of indoor, outdoor and long-range WiFi APs as well as routers

## Real-time Monitoring, Alerts & Reports



Available on all APs, Routers & management options

## GWN SERIES ACCESS POINTS



**GWN7602**



**GWN7605**



**GWN7615**



**GWN7624**



**GWN7625**



**GWN7630**



**GWN7660**



**GWN7664**



## GWN SERIES ACCESS POINTS



**GWN7605LR**



**GWN7630LR**



**GWN7660LR**



**GWN7664LR**

**(WEATHERPROOF LONG-RANGE)**

## GWN7062 & GWN7052 ROUTERS


Highlights



- 100 or 256 concurrent clients
- Wi-Fi 5 and Wi-Fi 6 option
- 1.27 or 1.77 Gbps speeds
- Dual-band 2x2:2 MU-MIMO
- Cloud provisioning & management with GWN.Cloud (coming soon)
- VPN, Mesh networks, firewall features & more

# MANAGEMENT OPTIONS – GWN SERIES ROUTERS

**GWN.CLOUD** *Coming Soon*



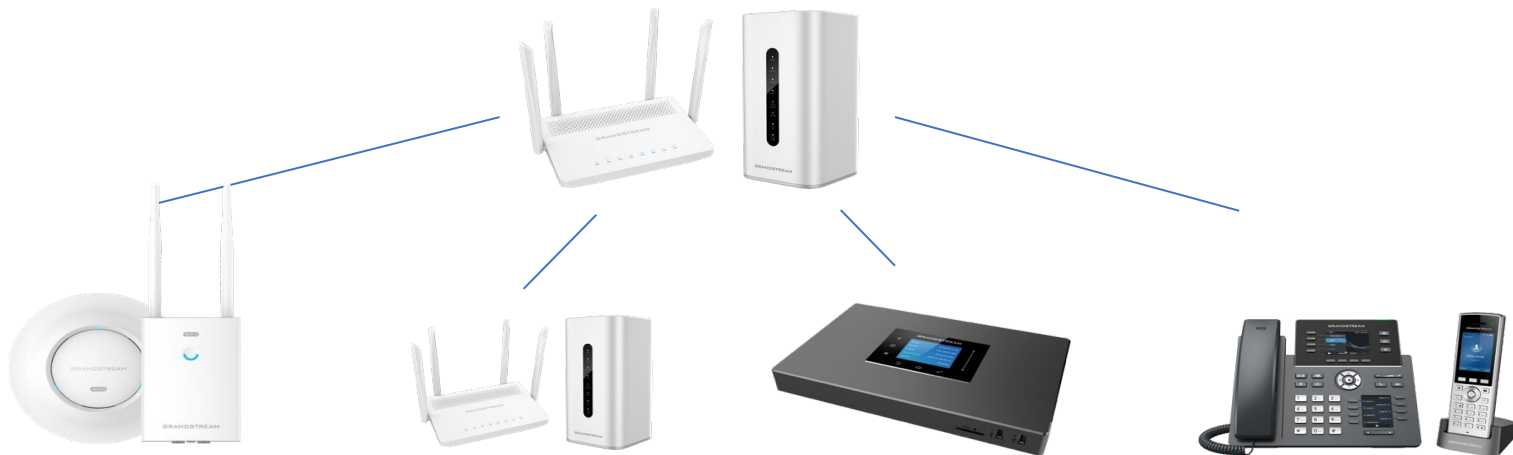
- FREE**
- AWS CLOUD PLATFORM**
- MOBILE APP & WEB UI**
- UNLIMITED APs & ROUTERS**
- SECURE CLOUD PROVISIONING**

**EMBEDDED CONTROLLER**



- FREE**
- FOR ROUTERS & APs**
- LOCAL DEPLOYMENT**
- 30 GWN APs**  
(GWN7052)
- 50 GWN APs**  
(GWN7052)

# INTEGRATE WITH GRANDSTREAM SOLUTIONS



## GWN Series APs

Use the GWN7052 & GWN7062 to setup and run Wi-Fi networks with Grandstream APs, while also utilizing Mesh, VPN, etc.

## GWN Series Routers

Pair multiple GWN series routers together to create and manage networks in one or many locations.

## UCM6300 Series

Build a unified communications platform that can be easily accessed through a Wi-Fi network for a truly wireless communication solution.

## Wi-Fi Capable Endpoints

Pair Grandstream's many Wi-Fi capable voice and video endpoints directly with GWN Series routers for a wireless communication solution.

## NEW FANVIL PROMOTION

Buy V64/V65×10pcs  
or V67×5pcs

Get 1pcs  
**Free CS30**



V65



V64



V67

**Free**





## NEW FANVIL PROMOTION

i61      i62      i63      i64

**Buy i6 series  $\geq$  5pcs**  
**Get i5 series 5% off SRP**

i51W      i52W      i53W      i56A

**i5 series 5% OFF**

#ExperienceVoIPSupply





**Indianapolis**  
Ruth's Chris Steak House  
Tuesday, October 11th  
11 AM - 3 PM





**Columbus**  
Ruth's Chris Steak House  
Wednesday, October 12th  
11 AM - 3 PM





**Pittsburgh**  
Ruth's Chris Steak House  
Thursday, October 13th  
11 AM - 3 PM

## Fanvil Roadshows

Sponsored by



Learn more & register now!

Win great prizes including a **\$300 VoIP Supply credit** towards Fanvil products!

<https://www.voipsupply.com/fanvil-roadshows>

## SANGOMA P310 & P315 INSTANT REBATE

P310 - \$5   P315 - \$10  
Instant Rebate

**Value-Based IP Phones**

*The Power You Need,  
The Price You Want*

September 1st, 2022 - December 31st, 2022



#ExperienceVoIPSupply



VoIP Supply's Reclaim equipment buyback program is your outlet for **selling off your used and excess** VoIP equipment. With Reclaim you can submit your equipment for sale to VoIP Supply and **receive fair market value** for it allowing you to "reclaim" a portion of your original investment.



VoIP Supply's exclusive Refresh program will allow you to replace a customer's device with a **certified reconditioned device** at a **fraction of the cost** of a new device. With VoIP Supply's Refresh program, you can provide your customers the support and sense of security that comes with a Refresh product.

# Questions & Thank You

@VoIPSupply



800-398-8647 | [voipsupply.com](https://voipsupply.com)

## Become a VoIP Supply Partner

- Exclusive Pricing Through VoIP Supply!
- Opportunity Support – Consulting & Solution Design



*Don Stefanie*  
*Channel Manager*  
*(716) 213-6906*  
*DonS@VoIPSupply.com*

