

Fanvil Technology Co., Ltd

Add: 10/F Block A, Dualshine Global Science Innovation Center,
Honglang North 2nd Road, Bao'an District, Shenzhen, China

Tel: +86-755-2640-2199 Fax: +86-755-2640-2618

Email: sales@fanvil.com support@fanvil.com

2024-08-EN-V1.0

Fanvil SIP Product Guide

Leading Global Provider of A&V-IoT Devices

Catalogue

01	About Fanvil
02	Fanvil A&V-IoT Product Family
04	Fanvil Distribution Network
05	Technology Partners
06	V Series High-end IP Phone
10	X Series IP Phone/Call Center Phone
14	XU Series IP Phone
18	X300 Series IP Phone
21	A320 Android Touch Screen IP Phone
23	Hospitality Products
29	ATA Gateway
31	Wireless UC Products
39	Audio/Video Intercom
43	Video Door Phone
48	Indoor Station
52	Console IP Phone
55	Fanvil Serverless Public Address System
56	2-Wire Products
59	Audio/Video Gateway & Paging
64	Business Conferencing
67	Business Headset
70	FDPS and FDMS
71	Accessories



About Fanvil

Fanvil Technology Co., Ltd. (Fanvil) is a leading global provider of A&V-IoT (Audio&Video-IoT) devices with three R&D centers in Beijing, Shenzhen and Suzhou, China, and three manufacturing bases in Huizhou and Shangrao, China, and Vietnam. Fanvil has focused on SIP unified communication technology innovation for more than 20 years and provides SIP phones and SIP security industrial products in the global market. As the pioneer in applying standardized network communication technology and Audio & Video technologies to build A&V-IoT, we are boosting the digital transformation for multiple industries.

Fanvil SIP products and communication solutions provide the bridge between people and our global network. With its advanced technology and design, Fanvil has powered different businesses in our community, transportation, education, healthcare, enterprises, etc.

Adhering to the core values of Efficient, Team Work, Integrity, Positive and Enterprising, Fanvil is committed to providing high-quality A&V-IoT devices, and building an intelligent world of infinite communication.

Fanvil A&V-IoT Product Family

V Series High-end IP Phone



ATA Gateway



X Series IP Phone/Call Center Phone



XU Series IP Phone



A320 Android Touch Screen IP Phone



Hospitality Products



X300 Series IP Phone



Wireless UC Products



Audio/Video Intercom



Video Door Phone



Indoor Station



Console IP Phone



Audio/Video Gateway & Paging



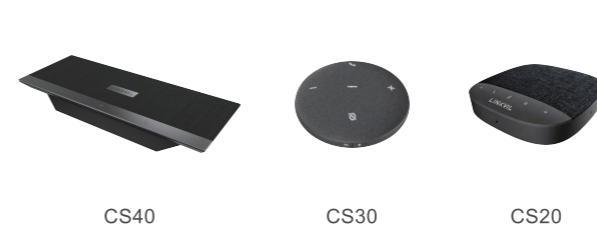
2-Wire Products



SIP Speaker



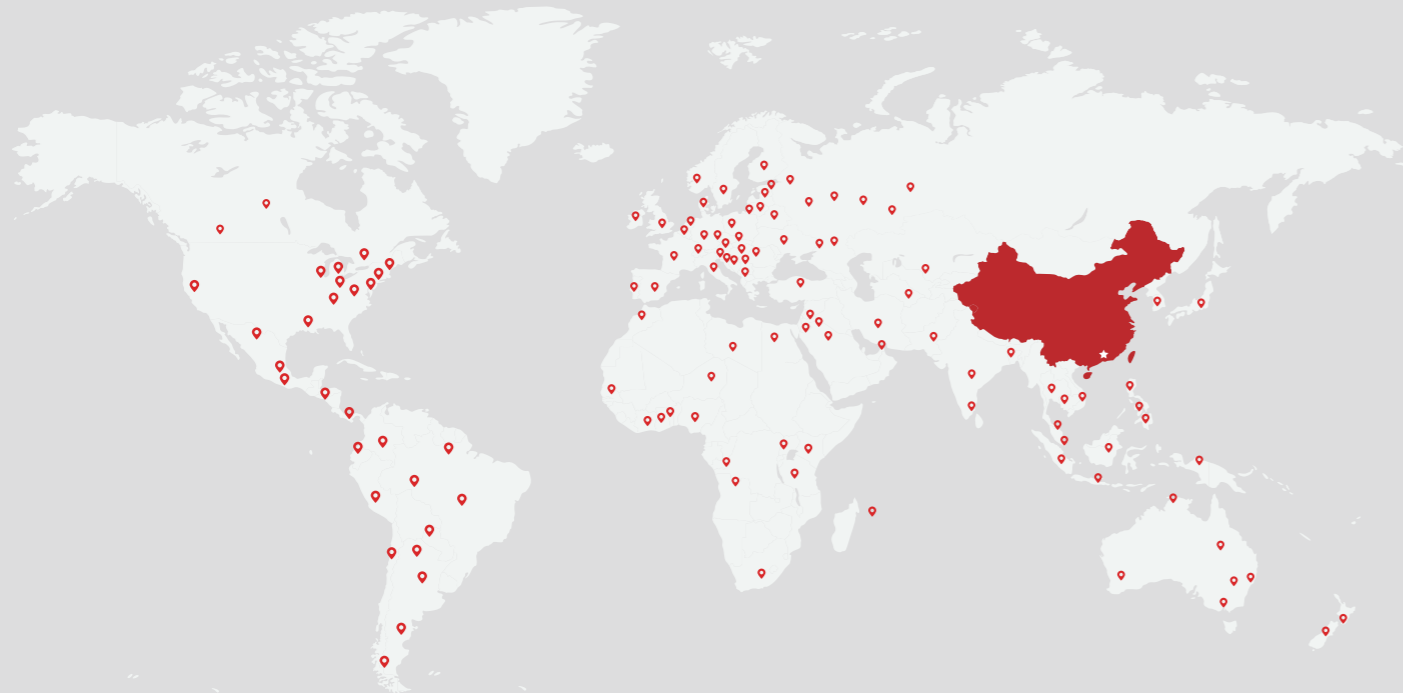
Business Conferencing



Business Headset



FANVIL DISTRIBUTION NETWORK



European

Germany, UK, France, Italy, Spain, The Netherlands, Russia, Greece, Poland, Belgium, Turkey, Moldova, Ukraine, Portugal, Slovenia, Lithuania, Romania, Bosnia and Herzegovina, Sweden, Bulgaria, Malta, Albania, Georgia, Czech Republic, Cyprus, Belarus, Estonia, Latvia, Armenia ...

APAC

China, South Korea, India, UAE, Saudi Arabia, Indonesia, Singapore, Bangladesh, Iraq, Malaysia, Philippines, Vietnam, Thailand, Australia, New Zealand, Israel, Pakistan, Nepal, Kyrgyzstan, Tajikistan, Uzbekistan, Mongolia, Kazakhstan, Turkmenistan, Azerbaijan ...

South America/The Caribbean

Guatemala, Honduras, Costa Rica, The Dominican Republic, The Commonwealth of Dominica, Panama, Colombia, Suriname, Ecuador, Peru, Brazil, Bolivia, Paraguay, Uruguay, Argentina, Chile ...

North-America

America, Canada, Mexico ...

Africa

South Africa, Togo, Morocco, Egypt, Ivory Coast, Ghana, Kenya, Tanzania, Uganda, Nigeria, Senegal, Tunisia, Namibia, Angola, Algeria ...

TECHNOLOGY PARTNERS



V Series High-end IP Phone

V Series is more than an efficient telephone but a delicate work of art, providing a smart and smooth business communication experience for executives and managers. As the high-end IP Phone featuring powerful functions, it offers a smart and all-in-one communication solution.



HIGHLIGHTS

V67 Flagship Smart Video Phone

HD³ HD Audio

Deliver HD audio with Opus, G.722 wideband codec

Adjustable Touch Screen

7-inch adjustable touch screen (0° to 40°) for different lighting environments, making it easier to read the messages no matter sit or stand

HD³ HD Camera

Built-in 5 Mega-pixel 1080P camera with a camera lens cover, providing an enjoyable HD video collaboration

Antibacterial Surface Protection

Antibacterial material of the handset and keypad surface effectively inhibits more than 99.5% of bacteria growth

Android 9.0 OS

Based on Android 9.0 operating system, V67 provides a comprehensive SDK (developer kit) to meet the customization needs of industry applications and secondary development

10-way Audio Conferencing

Support 10-way audio conferencing (including 2-party video calls) and 3-way video conferencing

Wireless Connection

Built-in 2.4GHz/5GHz Wi-Fi and Bluetooth 4.2, realizing more flexible connectivity



Colorful Lighting Keypad

The lighting keypad not only pleases your eyes but also improves work efficiency as a status indicator

V Series High-end IP Phone

V67



- 7-inch (1024×600) adjustable IPS touch screen (0° to 40 °)
- Based on Android 9.0 operating system
- 20 SIP lines, up to 116 DSS keys
- Antibacterial material of the handset and keypad surface effectively inhibits more than 99.5% of bacteria growth
- Colorful lighting keypad for specific scenario
- A built-in 5 Mega-pixel 1080P camera with a camera lens cover
- 10-way audio conference and 3-way video conference
- Built in 2.4G/5G Wi-Fi and Bluetooth 4.2
- Support wall-mounted installation (Optional WB107 Wall-mount Bracket)

V65



- 4.3-inch (480×272) adjustable IPS screen (0° to 40 °)
- 20 SIP lines, up to 45 DSS keys
- Antibacterial material of the handset and keypad surface effectively inhibits more than 99.5% of bacteria growth
- Be able to receive video calls with video codec H.264
- HD audio with wideband codec G.722 & Opus
- 6-way audio conference
- Built in 2.4G/5G Wi-Fi and Bluetooth 4.2
- Support wall-mounted installation (Optional WB107 Wall-mount Bracket)

V64



- 3.5-inch (480×320) color LCD screen
- 12 SIP lines, up to 21 DSS keys
- HD audio with wideband codec G.722 & Opus
- 6-way audio conference
- Built in 2.4G/5G Wi-Fi and Bluetooth 4.2
- Dual Gigabit ports, integrate PoE
- Available to link with security products
- Support wall-mounted installation (Optional WB107 Wall-mount Bracket)

V63



- 2.8-inch (320×240) color screen
- 6 SIP lines, up to 21 DSS keys
- HD audio with wideband codec G.722 & Opus
- 6-way audio conference
- Dual Gigabit ports, integrate PoE
- EHS wireless headset, Bluetooth via BT20 and Wi-Fi via Dongle
- Available to link with security products
- Support desktop stand and wall mountable

V Series High-end IP Phone

V62G/V62W



- 2.8-inch (320×240) color LCD screen
- 4 SIP lines, up to 21 DSS keys
- HD audio with wideband codec G.722 and Opus
- 6-Way audio conference
- Dual Gigabit ports, integrated PoE
- Built-in 2.4G/5G Wi-Fi, support Wi-Fi 6 (V62W)
- Built-in Bluetooth 5.4 (V62W)
- Available to link with security products
- Support wall-mounted installation (Optional WB107 wall-mount Bracket)

V61G/V61W



- 2.4-inch (320×240) color LCD screen
- 4 SIP lines, up to 12 DSS keys
- HD audio with wideband codec G.722 and Opus
- 6-Way audio conference
- Dual Gigabit ports, integrated PoE
- Built-in 2.4G/5G Wi-Fi, support Wi-Fi 6 (V61W)
- Built-in Bluetooth 5.4 (V61W)
- Available to link with security products
- Support wall-mounted installation (Optional WB107 wall-mount Bracket)

X Series IP Phone/ Call Center Phone

The stylish business appearance and HD color screen of Fanvil X series highlight the elegance of office work; HD audio/video phone calls make it efficient and quick to communicate. It performs excellently in various application scenarios.



HIGHLIGHTS

X7A+CM60 Android IP Phone with Camera

HD^{HD} HD Audio

Support wideband codec G.722 and Opus; Provide users a superb and clear audio call experience

7-inch Color Touch Screen

Bring users a smoother operation experience and a better visual experience

SIP 20 SIP Lines

Built-in Bluetooth

Easy to connect Bluetooth headset via built-in Bluetooth and helping users to handle multitask

Built-in Wi-Fi

Easy to connect Wi-Fi via built-in 2.4G/5G Wi-Fi and getting rid of messy cables

HD Video Call

Match with 1080p Fanvil CM60 HD USB Camera; Realize HD video image on the full screen and bring users a brand new video call experience

112 DSS 112 DSS Keys

Provide swifter function keys and enhance the efficiency on work



Fanvil CM60 Portable USB HD Camera

Video resolution: 1080p
It can be flexibly installed on the phone, computer, or desktop. With an adjustable cover, CM60 can protect users privacy well. Wider view angle brings a wider view

X7A+CM60



- With Android 9.0 OS, it brings a smoother and more intelligent operation experience
- Featuring a 7-inch color touch screen, it gives users an ideal visual experience
- 112 DSS keys on the screen for setting usual functions
- Support video codec H.264, providing premium HD video calls with 1080p CM60 camera
- Provide premium HD audio and wideband codec G.722 & Opus
- Built-in 2.4G/5G Wi-Fi and Bluetooth 4.2
- EHS wireless headset
- 10-way audio conference and 3-way video conference and SIP hotspot
- For meeting businessmen's needs, it supports the third party APP
- Dual Gigabit ports, Integrated PoE

X7A



- With Android 9.0 OS, it brings a smoother and more intelligent operation experience
- Featuring a 7-inch color touch screen, it gives users an ideal visual experience
- 112 DSS keys on the screen for setting usual functions
- Support video codec H.264, providing premium HD video calls with 1080p optional CM60 camera
- Provide premium HD audio and wideband codec G.722 & Opus
- Built-in 2.4G/5G Wi-Fi and Bluetooth 4.2
- EHS wireless headset
- 10-way audio conference and 3-way video conference and SIP hotspot
- For meeting businessmen's needs, it supports the third-party APP
- Dual Gigabit ports, Integrated PoE

X7



- 7-inch color screen brings users an ideal visual experience
- 127 DSS keys on the screen for setting usual functions
- Be able to receive video calls with video codec H.264
- Provide premium HD audio and wideband codec G.722 & Opus
- 20 SIP lines
- Built-in Bluetooth 4.2, Wi-Fi connectivity via Wi-Fi dongle
- EHS wireless headset
- 6-way conference and SIP hotspot
- Dual Gigabit ports, Integrated PoE

X7C



- 5-inch color screen, brings users an ideal visual experience
- 60 DSS keys on the screen for setting usual functions
- Be able to receive video calls with video codec H.264
- HD audio with wideband codec G.722 & Opus
- 20 SIP lines
- Built-in Bluetooth 4.2, Wi-Fi connectivity via Wi-Fi dongle
- EHS wireless headset
- 6-way conference and SIP hotspot
- Dual Gigabit ports, Integrated PoE

X210



- 4.3-inch main color screen, 2x3.5-inch side color screens for DSS keys
- Up to 106 DSS keys provide for easy and quick feature customization such as BLF and speed dial
- Be able to receive video calls with video codec H.264
- Provide premium HD audio and wideband codec G.722 & Opus
- 20 SIP Lines
- Built-in Bluetooth 4.2, Wi-Fi connectivity via Wi-Fi dongle
- EHS wireless headset
- 6-way conference and SIP hotspot
- Dual Gigabit ports, Integrated PoE

X2P



- Professional IP Phone customized for call center
- 2.8-inch (320x240) color screen
- 2 SIP lines
- Call center headset (RJ9 port, 3.5mm jack)
- LED keypads of Mute, call holding and auto answering
- Off-hook/on-hook by pedal switch
- 10/100Mbps Ethernet, Integrated PoE
- EHS wireless headset
- 3-way conference

XU Series IP Phone

Fanvil XU series are high-end IP phones. With strong complete functions, HD audio and enriched application scenarios, they can provide a quality and efficient collaborative experience and significantly improve work efficiency and team performance.



HIGHLIGHTS

X6U High-end IP Phone

HD Crystal-clear Audio

Wideband codec of G.722 and Opus in this device deliver you an immersive HD audio experience in both high band and low band with the network

LED Line Key

Newly add 5 LED indicator light line keys

Color Screens

4.3-inch main Color Screen
2x2.4-inch side Color Screens

SIP 20 SIP Lines



Built-in Bluetooth

Fanvil X6U helps you work with Bluetooth headset flexibly

60 DSS Keys

Offer you an intuitive and faster access to multiple functions and maximize your productivity



Greater Interoperability and Collaboration

Matched with accessories, like EHS headset via EHS Cable, Wi-Fi via Wi-Fi dongle and built-in Bluetooth, Fanvil X6U is designed to encourage your flexibility.

X6U



- 4.3-inch 480x272 main color screen, 2 x 2.4-inch 320x240 side color screens
- HD audio and wideband codec G.722 & Opus
- 20 SIP Lines
- 60 DSS keys, 5 line keys with LED
- 6-way conference
- Built-in Bluetooth 4.2, Wi-Fi connectivity via Wi-Fi dongle
- EHS wireless headset
- Support IPv4, IPv6 protocols
- Dual Gigabit ports, Integrated PoE

X5U



- 3.5-inch 480x320 color main screen, 2.4-inch 320x240 side color screen
- HD audio and wideband codec G.722 & Opus
- 16 SIP lines
- 30 DSS keys, 4 line keys with LED
- 6-way conference
- Dual Gigabit ports, PoE integrated
- Built-in Bluetooth 4.2, Wi-Fi connectivity via Wi-Fi dongle
- EHS wireless headset
- Support IPv4, IPv6 protocols
- Desktop/Wall-mounted installation

X5U-R



- Well-marked red
- 3.5-inch 480x320 color main screen, 2.4-inch 320x240 side color screen
- HD audio with wideband codec G.722 & Opus
- 30 DSS keys, 4 line keys with LED
- 6-way conference
- Dual Gigabit ports, Integrated PoE
- Built-in Bluetooth 4.2, Wi-Fi connectivity via Wi-Fi dongle
- EHS wireless headset
- Support IPv4, IPv6 protocols
- Desktop/Wall-mounted installation

X4U



- 2.8-inch 320x240 main color screen, 2.4-inch 320x240 side color screen
- HD audio and wideband codec G.722
- 12 SIP Lines
- 30 DSS keys, 3 line keys with LED
- 6-way conference
- Dual Gigabit ports, Integrated PoE
- Bluetooth connectivity via USB dongle, Wi-Fi connectivity via Wi-Fi dongle
- Support EHS wireless headset
- Support IPv4, IPv6 protocols
- Desktop/Wall-mounted installation

X3U Pro



- 2.8-inch 320x240 color screen
- HD audio with wideband codec G.722 & Opus
- 6 SIP lines
- 6-way audio conference
- Dual Gigabit ports, integrated PoE
- EHS wireless headset
- Support IPv4, IPv6 protocols
- Desktop/Wall-mounted installation

X3U



- 2.8-inch 320x240 color screen
- HD audio with wideband codec G.722 & Opus
- 6 SIP lines
- 3-way conference
- 3 line keys with LED
- Dual Gigabit ports, PoE integrated
- EHS wireless headset
- Support IPv4, IPv6 protocols
- Desktop/Wall-mounted installation

X300 Series IP Phone

The X300 series IP phone is a series of cost-effective SIP phones designed for enterprises, nursing home, and other application scenarios. It has concise design and powerful performance, greatly improving work efficiency and response speed with all-in-one communication solution and easy installation.



HIGHLIGHTS

X303W Enterprise Wi-Fi IP Phone

HD⁺ HD Audio Call

Support wideband audio codec Opus and G.722;
Bring users an immersive listening experience

2.4-inch Color Screen

User-friendly UI, ease of Use; Provide users a comfortable and efficient experience

Dual-core Chip

More powerful overall performance;
Faster response and more smooth operation



Built-in 2.4G & 5G Wi-Fi

Enable users to have more choices to connect the network



Support 6-way Audio Conference

The conference organizer can invite up to 5 participants to join in the conference

X303/X303P/X303G/X303W



- 2.4-inch 320x240 color screen
- HD audio with wideband audio codec G.722 & Opus
- 4 SIP lines
- Dual megabit ports (X303/X303P/X303W)
- Dual Gigabit ports (X303G)
- Integrated PoE (X303P/X303G/X303W)
- Built-in 2.4G & 5G Wi-Fi (X303W)
- 6-way conference
- EHS wireless headset
- Support IPv4, IPv6 protocols
- Desktop/Wall-mounted installation

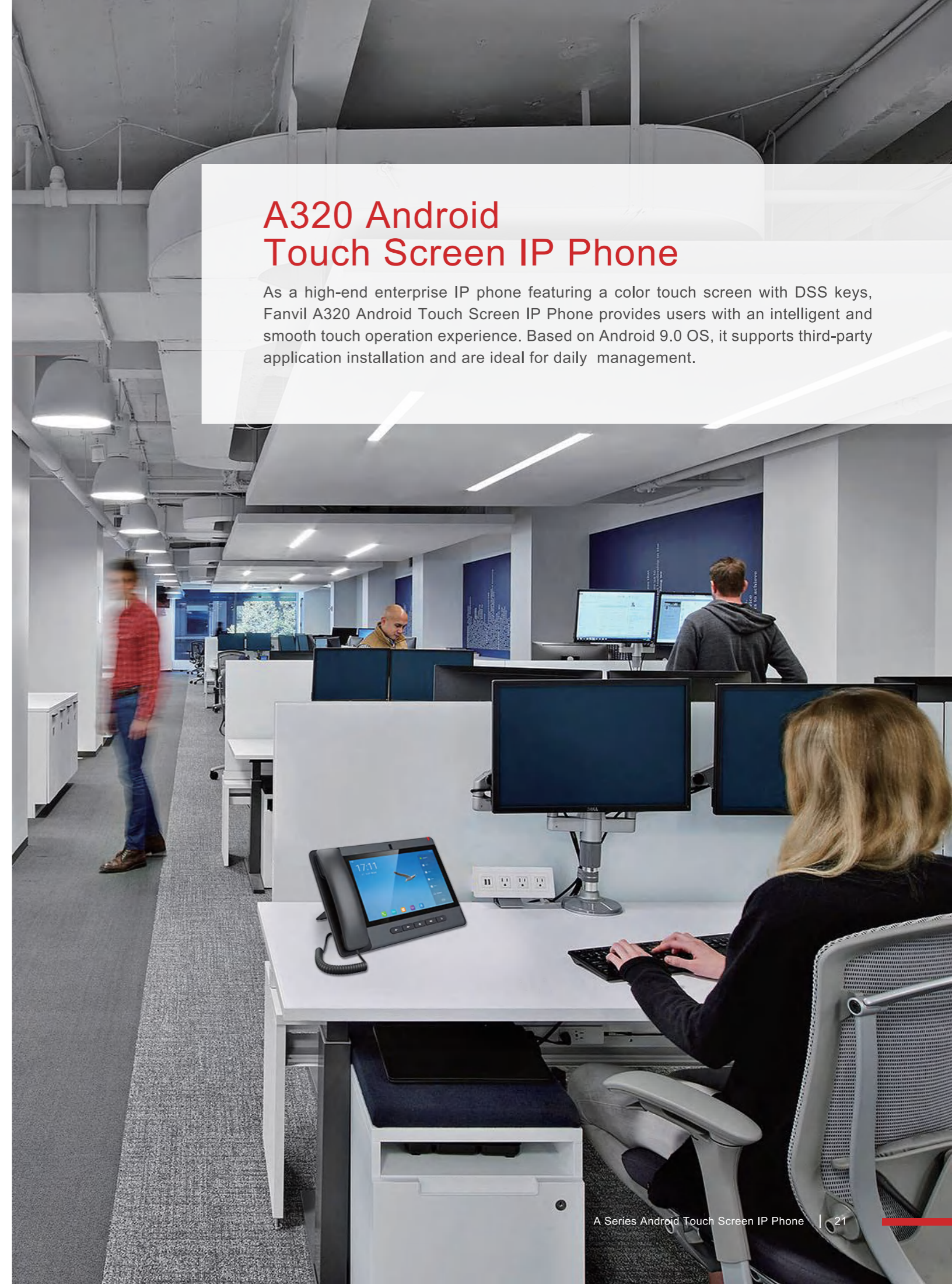
X301/X301P/X301G/X301W



- 2.3-inch 128x48 color screen
- HD audio with wideband audio codec G.722 & Opus
- 2 SIP lines
- Dual megabit ports (X301/X301P/X301W)
- Dual Gigabit ports (X301G)
- Integrated PoE (X301P/X301G)
- Built-in 2.4G & 5G Wi-Fi (X301W)
- 6-way conference
- EHS wireless headset
- Support IPv4, IPv6 protocols
- Desktop/Wall-mounted installation

A320 Android Touch Screen IP Phone

As a high-end enterprise IP phone featuring a color touch screen with DSS keys, Fanvil A320 Android Touch Screen IP Phone provides users with an intelligent and smooth touch operation experience. Based on Android 9.0 OS, it supports third-party application installation and are ideal for daily management.



HIGHLIGHTS

A320 Android Touch Screen IP Phone

Business Aesthetic Design

Business aesthetic design, crystal-clear color screen, user-friendly UI interface

Android 9.0 OS

It ensures stable operation of product and software, with good compatibility and functional extensibility, and support installation and use of third-party Android applications

Support 10-way Audio Conference

Support 10-way audio conferencing and 3-way video conferencing, greatly improving office efficiency

Efficient Wireless Communication

With built-in 2.4G/5G Wi-Fi and Bluetooth 5.0, it brings wireless office experience. Integrated USB 2.0 interface offers rich extension functions to meet diversified scene applications

HD Audio/Video Call

It supports wideband audio codec G.722 and Opus and video codec of H.264 1080P, and can provide the users with premium quality HD audio/video call experience



Built-in Adjustable Camera

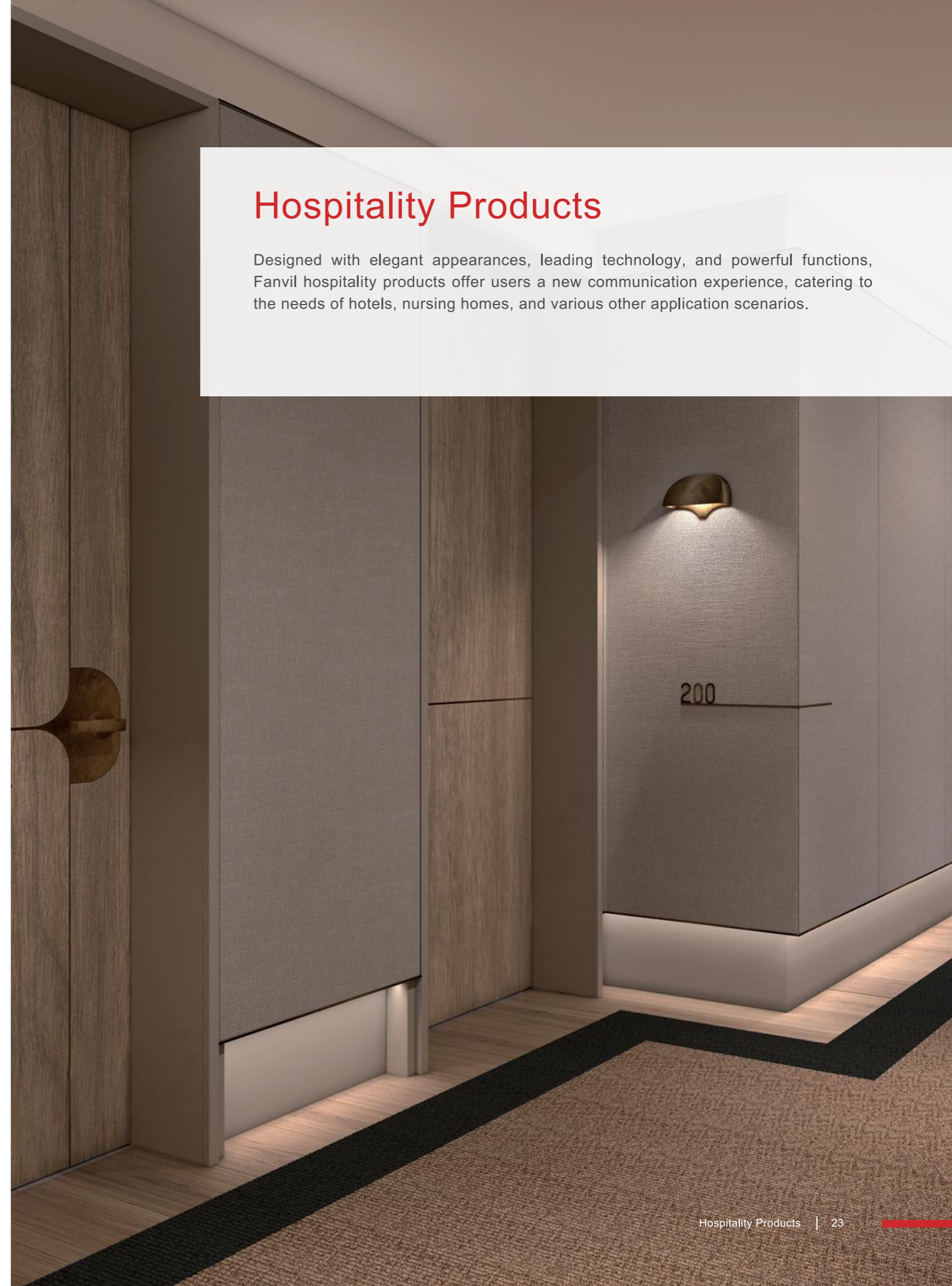
Built-in 8 Mega-pixel camera with a camera lens cover for privacy protection. Users can also adjust the camera angle to meet different needs



- 10.1-inch touch screen, easy for operation
- Support 20 SIP Lines
- Support 10-way audio conferencing and 3-way video conferencing
- Built-in adjustable 8 mega-pixel camera with a privacy cover
- Support Android 9.0 OS for the installation of third-party Android application
- Up to 116 DSS keys DIY configuration, with each DSS key set as Line/BLF/speech dial etc.
- Support HD audio with G.722 and Opus
- Support video codec H.264, providing premium HD video calls
- Built in 2.4G/5G Wi-Fi and Bluetooth 5.0
- Dual Gigabit ports, Integrated PoE

Hospitality Products

Designed with elegant appearances, leading technology, and powerful functions, Fanvil hospitality products offer users a new communication experience, catering to the needs of hotels, nursing homes, and various other application scenarios.



HIGHLIGHTS

H5W Hotel IP Phone

Stylish and Elegant

Designed for hospitality industry, reflect the stylish and elegant taste of high-end hotel

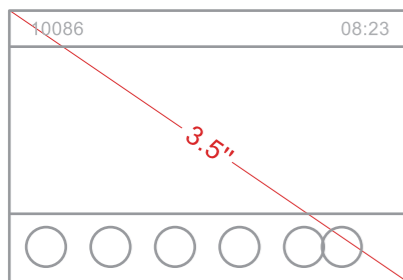
Built-in Wi-Fi

With built in 2.4G Wi-Fi, H5W enables wireless connection, making the deployment more flexible



6 Customized Quick Buttons

Set cleaning, booking, front office, meal and waking services



Color Screen with Friendly Interface

3.5-inch(480×320 pixel) color-screen display can be used to show hotel information. it is very intuitive for users.



USB Port for Charging

1 USB port for charging cellphones/pads, no need to worry if your plug is not standard locally.

HIGHLIGHTS

X305 Big Button IP Phone

3.5-inch Color Screen

Bring seniors an intuitive operation experience with a clearer visual guidance

HD⁺ HD Audio

Support wideband codec G.722 and Opus

Number Keys with Braille Dots

Big buttons with braille dots offer special caring convenience to users

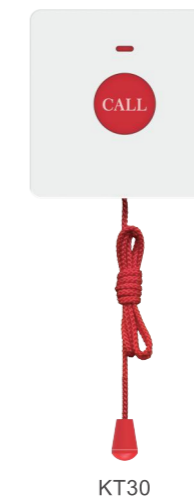


Built-in Wi-Fi

Easy to connect 2.4GHz/5GHz Wi-Fi and get rid of messy cables

Replaceable Speed Dial Buttons

Four speed dial buttons support image customization, helping locate contacts quickly for one-click call



Protect You Anywhere Anytime

X305 supports wireless buttons (Fanvil KT 1x/2x/3x Series) for remote one-click emergency call

Y501/Y501-Y Series SIP HealthCare Intercom

Considerate Care and Protection for Your Health

Caring And Stylish Design

It has an elegant and fashion appearance, and is easy to use with a caring design



Antibacterial Material Detachable Button Customize Your Intercom

The intercom is equipped with detachable DSS keys with antibacterial material. Users can customize settings according to what they need



Built-in Dual-band Wi-Fi Cost-efficient Deployment

With built-in 2.4GHz & 5GHz Wi-Fi, the Y501W/Y501W-Y can be deployed in an existing wireless network without additional wiring cost. It helps to deliver the HD audio communication in every emergency



Wireless Emergency Button Protect You Anytime

Call for help in an emergency when you can't get to the intercom. Pressing the wireless button (Fanvil KT 1x/2x/3x Series) to call the host machine

Hospitality Products

H6W



- 2 available colors(White & Black) , seamlessly integrated with different hotels' styles
- 3.5-inch (480×320) IPS color screen
- 1 USB port for phone charging
- 2 SIP Lines
- 5 customized soft keys for speed dial functions including housekeeping, ticket-booking, switchboard, ordering food, wake-up call service, etc.
- Provide premium HD audio with wideband codec G.722 & Opus
- Built-in 2.4G&5G Wi-Fi, support Wi-Fi 6
- Integrated PoE
- Support DND, Mute, Volume Control, etc.
- Support configurable dial plan
- Fanvil unique Hotspot function-several phones can share one number from server, and each phone has its extension number to contact/transfer/conference others

H5/H5W



- 2 available colors(White & Black) , seamlessly integrated with different hotels' styles
- 3.5-inch (480×320) color screen
- 1 USB port for phone charging
- 2 SIP Lines
- 6 customized soft keys for speed dial functions including housekeeping, ticket-booking, switchboard, ordering food, wake-up call service, etc.
- Be able to receive video calls with video codec H.264
- Provide premium HD audio with wideband codec G.722 & Opus
- Built-in 2.4G Wi-Fi
- PoE integrated
- Call hold, Redial, Call transfer, Hotline, Voice Mail, etc.
- Support configurable dial plan
- Fanvil unique Hotspot function-several phones can share one number from server, and each phone has its extension number to contact/transfer/conference others

H4/H4W



- 2 available colors(White & Black) , seamlessly integrated with different hotels' styles
- Fashion and elegant appearance
- 5 customized soft keys for speed dial functions including housekeeping, ticket-booking, switchboard, ordering food, wake-up call service, etc.
- 1 USB charging port for cellphones, iPad and, etc.
- Integrated PoE
- Support DND, Mute, Volume Control, etc.
- Provide premium HD audio with wideband codec G.722&Opus
- Built-in 2,4G&5G Wi-Fi, support Wi-Fi 6 (H4W)
- Fanvil unique Hotspot function-several phones can share one number from server, and each phone has its extension number to contact/ transfer/conference others

H3/H3W



- 2 available colors(White & Black) , seamlessly Integrated with different hotels' styles
- Fashion and elegant appearance
- 6 customized soft keys for speed dial functions including housekeeping, ticket-booking, switchboard, ordering food, wake-up call service, etc.
- 1 USB charging port for cellphones, iPad and, etc.
- PoE integrated
- Provide premium HD audio with wideband codec G.722&Opus
- Built-in 2,4G Wi-Fi
- Fanvil unique Hotspot function-several phones can share one number from server, and each phone has its extension number to contact/ transfer/conference others

H2U



- 2 available colors (White & Black)
- With tiny and fashion outlook, comfortable hand feeling, it can be applied to different scenarios like hotel, school, hospital, supermarket, residence and, etc.
- 2 SIP Lines
- Provide premium HD audio with wideband codec G.722 & Opus
- 10 speed dial keys for customizing service hotlines
- 1 programmable key, which can be set to work with door phones for controlling the door remotely or other operations
- Desktop/Wall mounted installation
- Support handset/Hands-free mode
- PoE integrated

H1



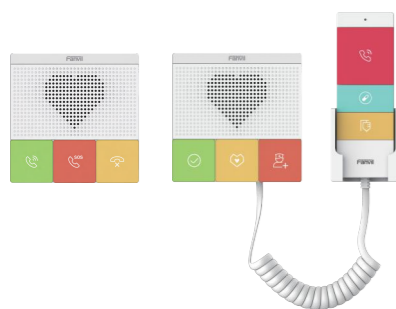
- Elegant and fashionable product appearance
- 8 programmable soft keys for service hotline
- Unique customized faceplate
- Support audio codec G.722 and Opus, handling varieties of audio applications
- 10/100 Mbps port, integrated PoE
- Two installation methods of desktop stand and wall mountable

X305



- 3.5-inch (320x240) color screen
- 10-digit keys with Braille dots to meet special needs
- Support wireless buttons (Fanvil KT 1x/2x/3x Series)
- Four speed dial buttons, support image customization
- Support HD audio, with adjustable volume key
- Built-in bluetooth 4.2 and 2.4GHz/5GHz Wi-Fi
- Hearing Aid compatible (HAC)
- Dual Gigabit ports, integrated PoE
- Desktop / wall-mounted installation

Y501/Y501-Y Series SIP Healthcare Intercom



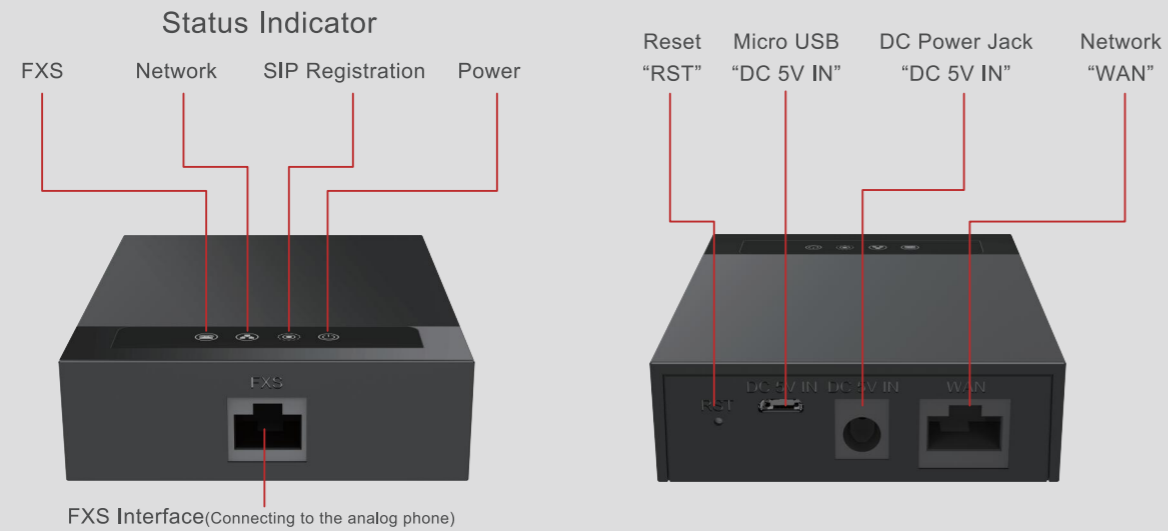
- Support audio codec G.722 and Opus
- Built-in 2.4G & 5G Wi-Fi (Y501W/Y501W-Y)
- Support wireless button (Fanvil KT 1x/2x/3x Series)
- Antibacterial material detachable function buttons
- IP54 waterproof and dustproof
- Support PoE power supply
- Built-in 1 short circuit input/output interface
- Support standard 86 box embedded, wall mountable
- Support handset buttons (Y501-Y/Y501W-Y)
- Two color status indicator light

ATA Gateway

ATA Gateway is a SIP gateway with an easy-to-use FXS port. By migrating to IP voice with easy-to-install ATA, it enables users to take advantage of VoIP on analog phones. It provides convenient, stable and cost-effective communication solutions for individual, enterprise and operator to realize the deployment of VoIP.

GA10 ATA Gateway

Smooth Communication, Affordable and Portable



Wireless UC Products

Highlights

Compact and Portable

Space-saving and portable with compact size

Simple Deployment

Support desktop and wall-mounted installation modes, simple-and-intuitive web configuration

3-way Audio Conference

Connected to the ATA gateway, analog phones are able to provide 3-way HD audio conferences

High Efficiency

It supports remote access to telephone system of enterprises via the Internet or telecommuting

USB Power Supply

Convenient-and-fast power supply via Micro USB interface

Full-scenes-matched

2 SIP lines, 1 FXS interface and 100Mbps network port, suitable for multiple working scenarios



Specification

System	Linux	Network	10/100 Mbps
SIP Lines	2 SIP Lines	Power Supply	DC 5V_1A or Micro USB
Button	Reset Button * 1	Working Temperature	0 ~ 45°C
Audio Codec	G.722, Opus, G.711(A/u), G.729A/B, G.726, iLBC	Working Humidity	10% to 95%
Conference	3-way Conference	Installation	Desktop / Wall-mounted
Caller ID Display	Bellcore, ETSI, NTT, DTMF-based CID	FXS	RJ11*1



HIGHLIGHTS

CA400 All-in-One Conference Solution

All-in-One Design

CA400 provides a one-stop solution, integrating audio, video, and wireless screen sharing features, to simplify meeting room setups and enhance user convenience.

Easy to Deploy

No need to find professional IT and no complicated system integration is needed, users can easily install it by themselves.



4K wireless Screen Sharing, Plug and Play

With a simple press, users can effortlessly enjoy a 4K display, making the entire experience smooth and productive.

Superior Audio Quality

8-array omnidirectional mics for precise voice pickup. Equipped with AEC (Acoustic Echo Cancellation), ANS (Adaptive Noise Suppression), AGC (Automatic Gain Control), and vocal enhancement technology, CA400 delivers delicate sound details.



Auto-framing

With wide-angle coverage of 118.5°, a 5x digital zoom, and auto-framing technology, the camera will automatically zoom in/out to frame all participants.

Excellent Compatibility

Compatible with major UC platforms and different PCs equipped with full-featured USB Type-C or HDMI+USB, ensuring effortless usage on any device.

HIGHLIGHTS

DB20-H All-in-One Phone Station

All-in-One Design

Combining the speaker, Bluetooth handset, and wireless phone charging function into one unit streamlines communication and saves desktop space.

Tilt Stand

Tilt-able phone stand for better image angle during video calls.

Bluetooth Handset

It frees you from the limitations of wired handsets, allowing for a more comfortable calling experience with freedom of movement.

Wireless Phone Charging

No need for charging cables, simply place your phone on the device to start charging, keeping your desktop neat and tidy.

Convenient Communication Experience

Enable calling seamlessly switch among softphone, UC and phone calls for a smoother communication experience.



HD Audio

Equipped with 3W vocal enhanced speaker and dual-mic, support full-duplex. Adopting ENC, ANS and AEC technologies, it brings you a clear and natural audio call experience.

HIGHLIGHTS

W712 RoIP Gateway

Interconnection between Different Communication Systems

The W712 integrates the radio module in UHF 400-470 MHz and adopts the SIP standard protocol. It is compatible with most mainstream IP PBX, easily realizing the interconnection between analog/DMR II digital radios and SIP communication devices.

Plug and Play Easy Management

With built-in wireless radio module, W712 is small and portable, similar to the size of a router. W712 can be deployed and managed through the web page, achieving the easy management.



Product Application

Product Application
W712 supports 1 connection of analog/DMR II digital radios and 1 connection of SIP call.

Trans-regional Communication
Multiple DSS keys on SIP phones can be used as speed dial keys for different groups.

Group Call
W712 supports group calls between analog/digital radios and SIP phones.

HIGHLIGHTS

DECT IP Phone System

High-performance Communication

Supporting registration with up to 10 W610D DECT handsets, the DECT Phone System is launched with robust processing capacity for up to 10 SIP accounts and 10 simultaneous calls.

HD Voice Quality Clearer and More Stable

With upgraded hardware and acoustic algorithm, the DECT Phone System delivers HD audio for flexible employees and offers noise-free calls with increased volume for those in complex environments.

Incoming Call Vibration, Never Miss Important Information

Activate vibration function on W610D for timely alerts. Never miss a critical message or call even in mute mode.



Support Call Recording

W712 is equipped with USB interface and TF card interface that supports the capacity of up to 128G, which can be used to record the calls.



Support PTT (Push-to-Talk)

Simply pressing the button connects you to the preset call group, enabling seamless coordination with a team.

HIGHLIGHTS

W611W Portable Wi-Fi Phone

High Protection Level Suitable for Harsh Environment

W611W certifies to IP67 standard, which is waterproof, dustproof, and drop-safe from 1.8-meter height.

HD Voice Quality, Clearer and More Stable

Equipped with HD speaker, W611W supports Opus and G.722 wideband audio decoding. Adopting noise reduction and AEC technology, W611W brings you HD gorgeous voice quality.

Large Capacity Battery for Long-term Use

Installed with a rechargeable 1900mAh battery, W611W is ready for 9 hours talk time or 200 hours standby time. (*The data is based on the laboratory test.)

Support Wi-Fi 6, Faster and Stronger Signal

W611W supports dual-band Wi-Fi 802.11 a/b/g/n/ac/ax (Wi-Fi 6, 2.4GHz & 5GHz), bringing an extreme wireless experience.



Wi-Fi Roaming & Encryption

- Support IEEE802.11k/v/r roaming
- Support WPA / WPA2-PSK and 802.1X EAP encryption to ensure communications security

Wireless UC Products



RC10 Receiver Hub



CM70 UHD Camera



MS10 Screen-Sharing Speakerphone



CA400 All-in-One Conference Solution

RC10 Receiver Hub

- Support HDMI-enabled display and wireless camera (1080p), perfect for CM70 4K UHD camera
- Clip-able stand with magnetic pad for easy mounting on display

CM70 UHD Camera

- Ultra-wide-angle lens with 8MP
- Auto-framing, get all attendees in focus automatically
- 5x digital zoom, brings you crystal image quality
- Stream 1080P Full HD video wirelessly from your laptop
- Clip-able stand with magnetic pad for easy mounting
- With an OSD remote control, no need to download additional applications for settings

MS10 Screen-Sharing Speakerphone

- One-click 4K wireless screen sharing without the need for software installation
- 3W speaker, 8-array omnidirectional mics, 4m voice pickup range
- Proprietary algorithm brings the best voice with: Acoustic Echo Cancellation (AEC); Automatic Noise Suppression (ANS); Automatic Gain Control (AGC)
- Integrated cable management to keep desktop clean

DB20-H All-in-One Phone Station

- Dual omnidirectional microphone, 2.5-meter voice pickup range
- Built-in bluetooth 5.4 with a transmission range of up to 10 meters
- 3W vocal enhanced speaker for clear and excellent sound quality
- Easily connect devices via Bluetooth/USB-A
- Environmental Noise Cancellation (ENC) enables focused work even in noisy environments
- Supports Automatic Noise Suppression (ANS), Acoustic Echo Cancellation (AEC), and Automatic Gain Control (AGC)
- 10W wireless charger for smartphones
- Adjustable phone stand for better viewing angle

W712 RoIP Gateway

- Integrate 400-470 MHz radio modules to connect the analog/DMR II digital radios
- Compatible with SIP protocol to connect SIP communication devices
- High compatibility with Motorola, Hytera and other mainstream analog/digital radios
- Support HD audio with G.722 and Opus
- Support USB 2.0 interface and TF card interface for data storage or offline upgrade
- Support call recording and call logs of two-way radios and SIP phones
- Dual Megabit Ethernet for network transmission
- Supports the power supply via DC 12V PSU and PoE (at)
- Supports the Web management for devices
- Support desktop and wall-mounted installation

W710D IP DECT Base

- Support up to 10 W610D DECT handsets
- Support 10 parallel calls
- Support XML/LDAP/Broadsoft/Remote Phonebook
- Local phonebook: 1000 local contacts for each terminal
- External antenna, DECT radio coverage up to 50m indoors and 300m outdoors
- Support G.722 and Opus
- Support SRTP / SIPS / TLS, LDAP(s) and HTTPS
- Support PoE
- 20000 call log
- Compatible with Fanvil W610D
- Minimum operating temperature -10 C, suitable for more scenarios

W610D Portable IP DECT Phone



- 2" 240 x 320 color screen with intuitive user interface
- Support DECT frequency band (America, European, Japan, Taiwan, Brazil etc.)
- HD audio with noise reduction
- A sturdy and reliable belt clip for convenient movement
- Support incoming call vibration
- Drop-safe from 1.8-meter height
- Built-in Bluetooth 5.0, compatible with wireless headphones for use
- Headset connection via 3.5 mm jack
- One configurable push-to-talk (PTT) button for quick dial
- Minimum operating temperature -10 C , suitable for more scenarios
- Up to 8 hours' talk time and up to 200 hours standby time
- *The data is based on the laboratory test.

W611W Portable Wi-Fi Phone



- 2.4" 240x 320 color screen with intuitive user interface
- High protection level of I67, which is waterproof, dustproof, and drop-safe from 1.8-meter height
- Up to 16 DSS keys, quick access to basic functions
- Support sidetone function
- Incoming call vibration
- Support dual-band Wi-Fi 802.11 a/b/g/n/ac/ax (Wi-Fi6, 2.4GHz & 5GHz)
- Support IEEE802.11k/v/r roaming
- Support WPA/WPA2-PSK and 802.1X EAP encryption to ensure communications security
- Built-in Bluetooth 5.0 can be used to connect wireless earphone
- Support gravity sensor and the screen will be on when the phone is raised or put down during a call
- One configurable push-to-talk (PTT) button for quick dial, quick intercom, and quick multicast
- Up to 9 hours' talk time and up to 200 hours standby time

W610W Portable Wi-Fi Phone



- 2" 240x320 color screen with intuitive user interface
- Built-in dual-band Wi-Fi(2.4G/5G)
- Incoming call vibration
- Up to 16 DSS keys, quick access to basic functions
- Support IEEE802.11k/r roaming
- Support WPA/WPA2-PSK and 802.1X EAP encryption to ensure communications security
- Built-in Bluetooth 5.0 can be used to connect wireless earphone
- No operation screen after 10 seconds during a call
- One configurable push-to-talk (PTT) button for quick dial, quick intercom, and quick multicast
- Up to 9 hours' talk time and up to 200 hours standby time

HT601 PTT Intercom Headset



- Compatible with LINKVIL portable Wi-Fi phones (W610W/W611W)
- Support HD audio, providing clear voice in noisy environments
- Soft ear hanging for comfortable wearing
- 360°movable rod can be rotated at will
- Removable earplugs can be worn either side
- Premium PTT button component with wired control, providing comfortable and durable use experience
- A DSS button and a PTT button to meet the requirements of more scenarios

Audio/Video Intercom

Fanvil audio/video intercom has the advantages of HD audio, saving operation cost, quick deployment, easy maintenance and strong scalability. It also features short-in and short-out interfaces to achieve the linkage of other security devices. Users can achieve the remote deployment and management via Fanvil Device Management System.



A10 Series SIP mini Intercom

Concise Design and Easy of Use

Compact and Stylish Appearance

A10 has a compact and fashion appearance, and is easy to use with a caring design

Clearly Defined Key, Ease of Use

The intercom is equipped with three detachable function keys. Users can customize setting according to what they need

One-click Call, Instant Response

When the users presses the call button, the host machine will receive the call information. The call group members can receive extension calls at the same time. Speeding up the call response speed

External Alarm Quick Emergency Response

When the user can't get out for help in a special situation, the emergency button can be triggered to call the host machine. Improving the emergency response time

Dual-band 2.4GHz & 5GHz Wi-Fi (A10W)

A10W has built-in dual-band 2.4GHz & 5GHz Wi-Fi, providing wireless network communication and fluent communication experience



i16SV Video Intercom

Reliable Outdoor Emergency Intercom

Highlights

Elegant Design

Simple design and operation make it easy for users to operate

HD Audio Intercom

Support G.722 HD audio, with voice intercom of high quality

HD Video Intercom

Built-in camera supports high-resolution video decoding, making video clearer and smoother

Wide Temperature Range

Wide temperature range from -30°C to 60°C can meet demands in adverse outdoor environment

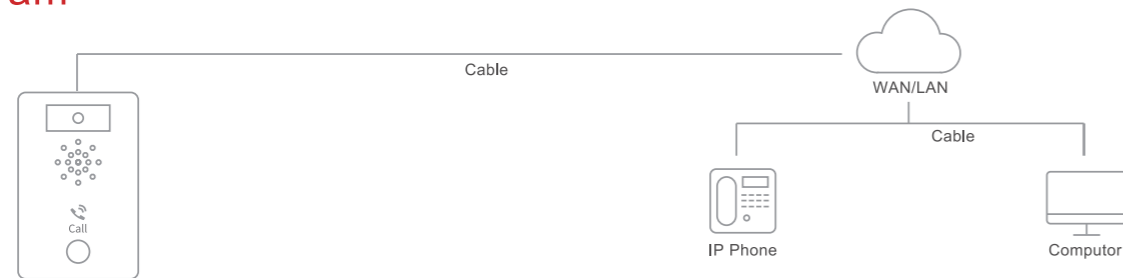
Multi-protection

IP65 and IK10 protection can effectively prevent dust and splash, suitable for multiple indoor scenarios

Simple Configuration Management

It is configured with webpage online, easy to be managed; batch deployment through Fanvil Device Management Solution (FDMS)

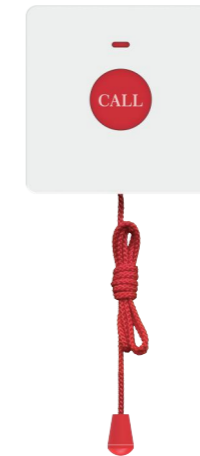
Diagram



KT10



KT20



KT30

Wireless Emergency Button, Protect You Anytime

Call for help in an emergency when you can't get to the intercom. Pressing the wireless button (Fanvil KT 1x/2x/3x Series) to call the host machine

i16SV/i16SV-02P Video Intercom



- Standard SIP protocol, Compatible with major popular IP PBX/IMS platforms
- 1 Access control(i16SV), 2 Access controls(i16SV-02P)
- Built-in HD camera with infrared night vision, adopt H.264 codec
- HD voice speech quality with built-in 3W speaker and Acoustic Echo Cancellor (AEC)
- IP65 waterproof and dustproof
- IK10 anti-collision with robust die-cast aluminum frame
- Report to the control center if the cover is removed with the design of anti-tamper alarm
- -30°C to 60°C wide range of temperature adaptability (i16SV)
- Built-in 2 short circuit input interfaces and 2 short circuit output interfaces
- Support online management and upgrade

i16S/i16S-02P Audio Intercom



- Standard SIP protocol, Compatible with major popular IP PBX/IMS platforms
- 1 Access control (i16S), 2 Access controls(i16S-02P)
- HD voice speech quality with built-in 3W speaker and Acoustic Echo Cancellor (AEC)
- IP65 waterproof and dustproof
- IK10 anti-collision with robust die-cast aluminum frame
- Report to the control center if the cover is removed with the design of anti-tamper alarm
- -30°C to 60°C wide range of temperature adaptability
- Built-in 2 short circuit input interfaces and 2 short circuit output interfaces
- Support online management and upgrade

i10S/i10SV Audio/Video Intercom



- Standard SIP protocol,Compatible with major popular IP PBX/IMS platforms
- Built-in HD camera with infrared night vision, adopt H.264 codec
- Built-in 1W speaker and Acoustic Echo Cancellor (AEC)
- IP54 waterproof and dustproof
- -20°C to 50°C wide range of temperature adaptability
- Built-in 1 short circuit input interface and 1 short circuit output interface
- Support online management and upgrade

A10 Series SIP mini Intercom



- Support audio codec G.722 and Opus
- Built-in 2.4G & 5G Wi-Fi(A10W)
- Support wireless button (Fanvil KT 1x/2x/3x Series)
- IP54 waterproof and dustproof
- Built-in 2W speaker and Acoustic Echo Cancellor (AEC)
- Two color status indicator light
- Support PoE power supply
- Functionality including security, intercom and broadcasting
- Built-in 1 short circuit input/output interface
- Support standard 86 box embedded, wall mountable

Video Door Phone

Fanvil video door phone is designed for users in the security industry. It may be installed indoor or outdoor to provide door access control of various buildings, with hands-free call and video monitoring functions.



i67 Face Recognition Door Phone

Safer and Smarter Access Control



Highlights

Simple and Elegant

Aluminum alloy body with 7 inch high-definition screen brings excellent visual experience

Strong and Durable

Waterproof, dustproof and anti-collision with high protection level IP66 and IK07, wide range temperature from -20°C to 60°C

Smart and Convenient

Access control by face recognition, IC/ID Card, PIN code, QR Code, DTMF Code, and remote door opening

HD Audio and Video

Two Built-in 2 Mega-pixel wide-angle cameras with infrared night-vision feature, users can make audio/video calls via a speed-dial button

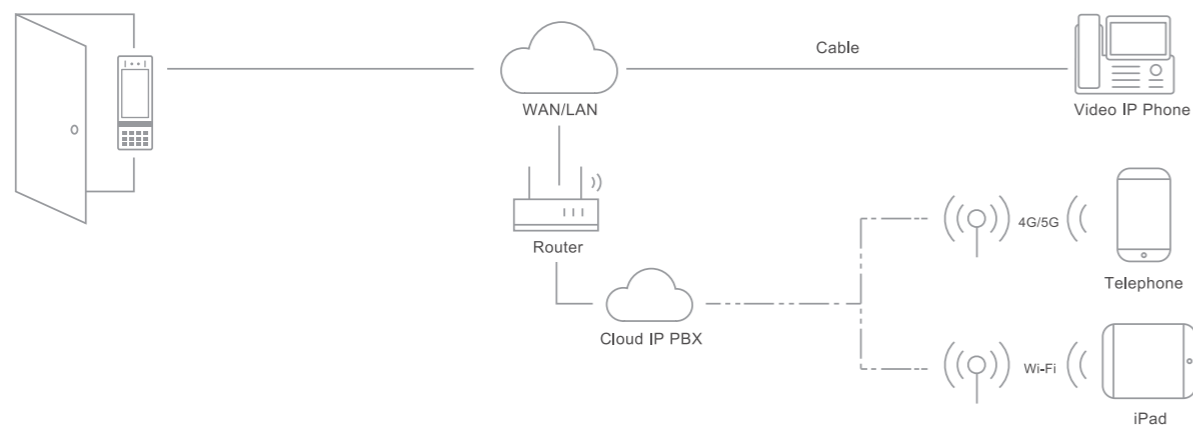
Linkage with Security System

It is easy to be integrated with other standard SIP devices to realize video calls, remote door opening and other functions

Remote Access Control with Mobile Phone

Residents can communicate with visitors and easily identify visitors from mobile phone App

Diagram



i64 Video Door Phone

Robust Outside-Smart Inside



Highlights

Strong and Durable

High protection level IP66 and IK07, waterproof, dustproof and anti-collision

Smart and Convenient

Achieve smart access control with password, RFID/IC cards, NFC, indoor switch, remote DTMF and Time open door

Wide Temperature Range

Wide temperature range from -40°C to 70°C, it can work perfectly in most outdoor environments

HD Audio and Video

Built-in 2 Mega-pixel wide-angle camera with infrared night-vision feature, users can make audio/video calls via a speed-dial button

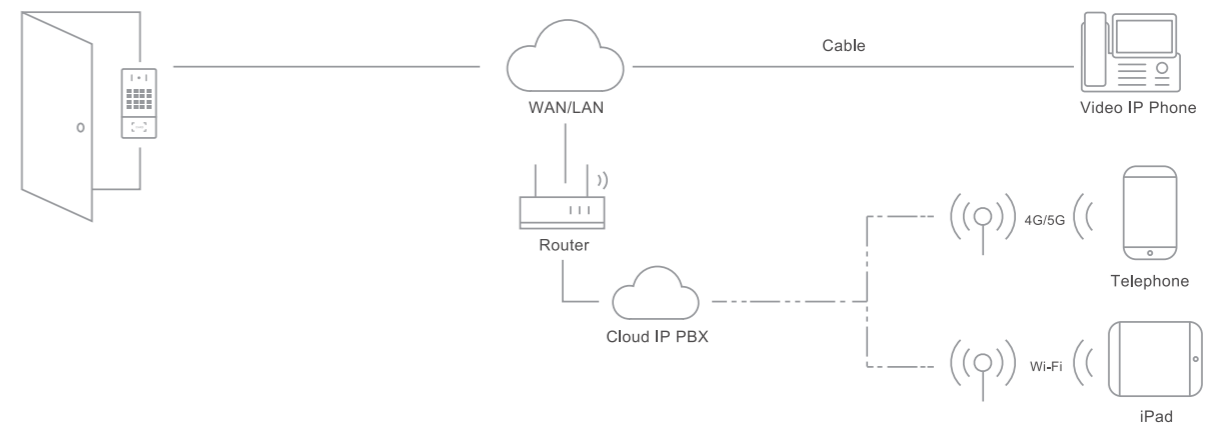
Remote Access Control with Mobile Phone

Residents can easily identify visitors via mobile phone App. With one-click door opening feature, it saves lots of time

Thoughtful and Helpful

Can be integrated with induction loop antenna, providing the more humanized service for the users with hearing impairment

Diagram



i67 Face Recognition Door Phone



- IP66 and IK07, wide range temperature from -20°C to 60°C
- All aluminum alloy construction and a numeric keypad with colorful light effect
- 7 inch high-definition screen offers excellent visual experience
- Two built-in 2 Mega-pixel wide-angle cameras with infrared night-vision feature
- Access control by face recognition, IC/ID Card, PIN code, QR Code, DTMF Code, and remote door opening
- Compatible with SIP and ONVIF protocols
- Line-out interface can be integrated with induction loop antenna
- HD voice speech quality with built-in 3W speaker and AEC (Acoustic Echo Canceller)

i66 Face Recognition Door Phone



- IP66 and IK07, wide range temperature from -40°C to 60°C
- All aluminum alloy construction and a numeric keypad with colorful light effect
- Two built-in 2 Mega-pixel wide-angle cameras with infrared night-vision feature
- Access control by face recognition, IC/ID Card, PIN code, QR Code, DTMF Code, and remote door opening
- Compatible with SIP and ONVIF protocols
- Line-out interface can be integrated with induction loop antenna
- HD voice speech quality with built-in 3W speaker and AEC (Acoustic Echo Canceller)

i64 Video Door Phone



- Aluminum alloy design and a numeric keypad
- IP66 and IK07, wide range temperature from -40°C to 70°C
- Access control by password, RFID/IC cards, NFC, indoor switch, remote DTMF and Timed open door
- Built-in 2 Mega-pixel wide-angle camera with infrared night-vision feature
- Compatible with SIP and ONVIF protocols
- Line-out interface can be integrated with induction loop antenna
- Built-in maximum 128GB capacity TF card for image storage
- HD voice speech quality with built-in 2.5W speaker and Acoustic Echo Canceller

i63 Video Door Phone



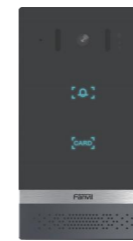
- Aluminum alloy design and 5 speed-dial buttons
- IP66 and IK07, wide range temperature from -40°C to 70°C
- Access control by RFID/IC cards, NFC, indoor switch, remote DTMF and Timed open door
- Built-in 2 Mega-pixel wide-angle camera with infrared night-vision feature
- Compatible with SIP and ONVIF protocols
- Line-out interface can be integrated with induction loop antenna
- Built-in maximum 128GB capacity TF card for image storage
- HD voice speech quality with built-in 2.5W speaker and Acoustic Echo Canceller

i62 Video Door Phone



- Aluminum alloy design and single speed-dial button
- IP66 and IK07, wide range temperature from -40°C to 70°C
- Access control by RFID/IC cards, NFC, indoor switch, remote DTMF and Timed open door
- Built-in 2 Mega-pixel wide-angle camera with infrared night-vision feature
- Compatible with SIP and ONVIF protocols
- Line-out interface can be integrated with induction loop antenna
- Built-in maximum 128GB capacity TF card slot for image storage
- HD voice speech quality with built-in 2.5W speaker and Acoustic Echo Canceller

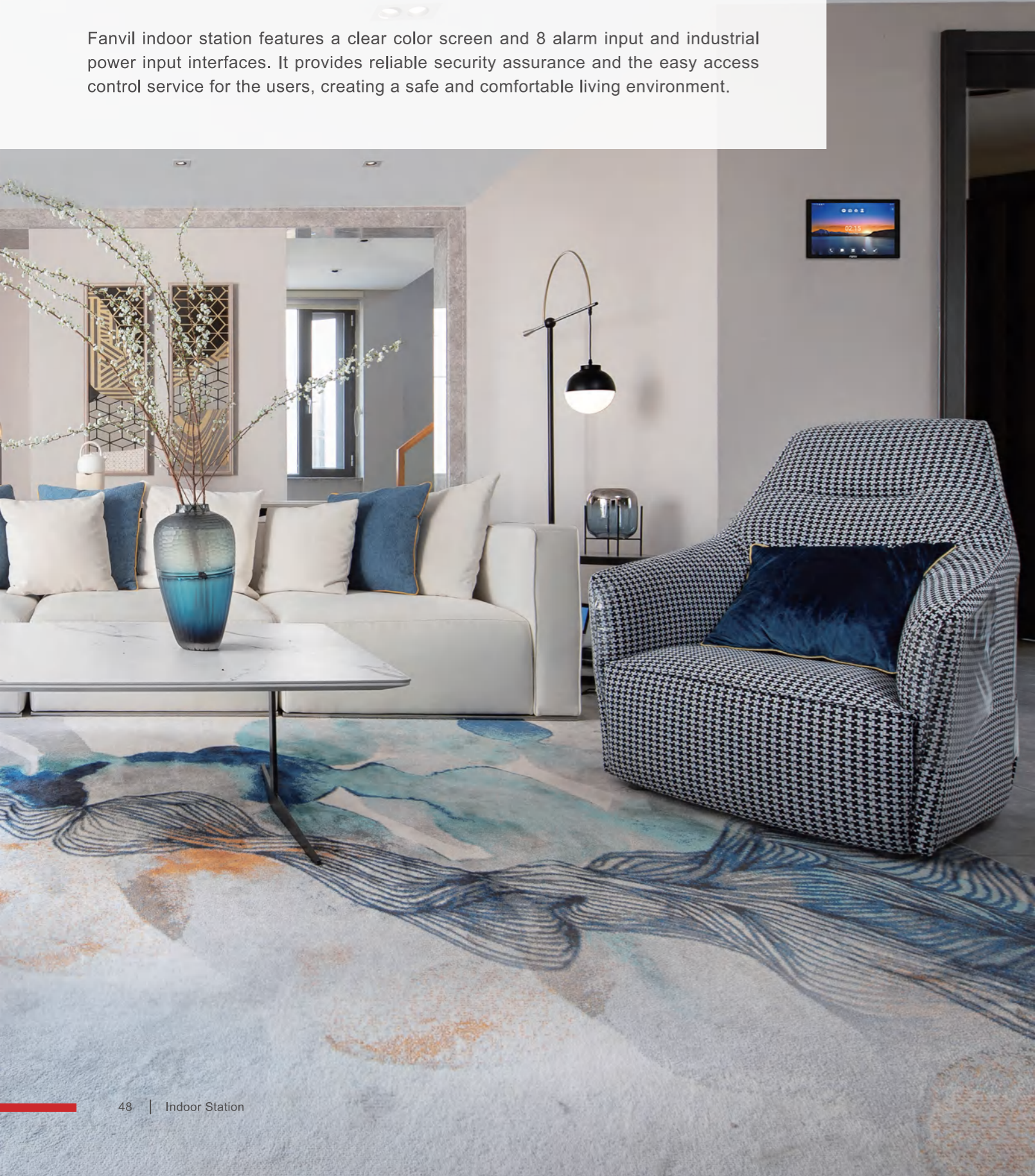
i61 Video Door Phone



- Aluminum alloy design and single speed-dial touch button
- IP66 and IK07, wide range temperature from -40°C to 70°C
- Access control by RFID/IC cards, NFC, indoor switch, remote DTMF and Timed open door
- Built-in 2 Mega-pixel wide-angle camera with infrared night-vision feature
- Compatible with SIP and ONVIF protocols
- Line-out interface can be integrated with induction loop antenna
- Built-in maximum 128GB capacity TF card for image storage
- HD voice speech quality with built-in 2.5W speaker and Acoustic Echo Canceller

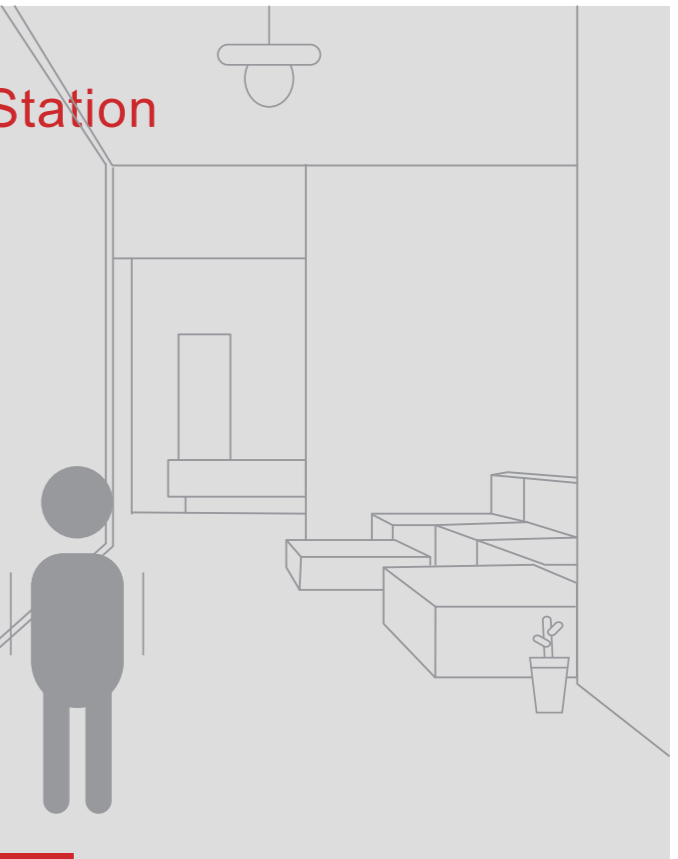
Indoor Station

Fanvil indoor station features a clear color screen and 8 alarm input and industrial power input interfaces. It provides reliable security assurance and the easy access control service for the users, creating a safe and comfortable living environment.



i507W Android Indoor Station

Fashionable Outlook, Easy Operation



Highlights

UI Elegant Design

Deliver a user-friendly experience with an elegant design and color screen

Smooth Operation System

Android 9.0 OS supports a greater compatibility and more powerful functions

Support Wireless Button

Support optional wireless buttons (Fanvil KT 1x/2x/3x Series) for remote one-click calls

HD Audio and Video Communication

Users can communicate with visitors with superb audio and clear video images

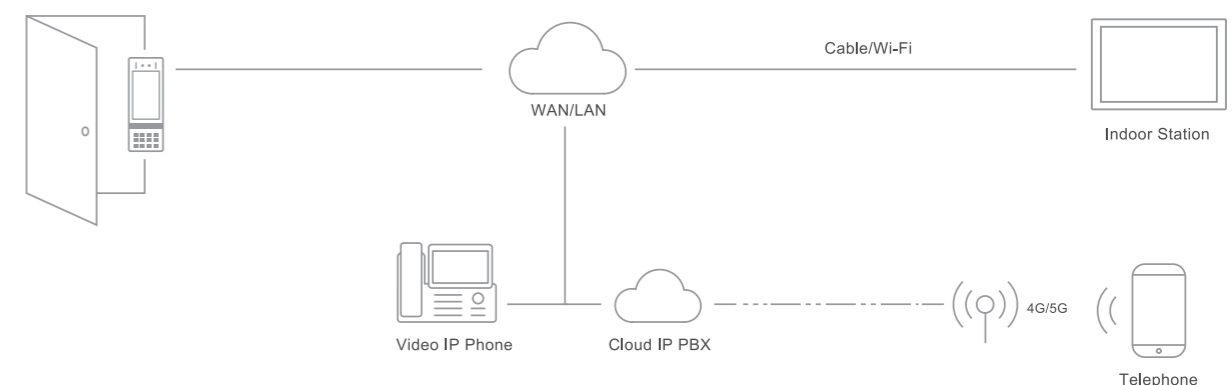
Support Wi-Fi

It allows users to choose wireless connection for different requirements

Rich Interfaces

Flexible and powerful with rich interfaces to connect more security devices

Diagram



i507W Android Indoor Station



- 10.1 inch 1280× 800 capacitive color touch screen
- Android 9.0 operating system, meeting the customization needs of industrial applications and secondary development
- Support video codec H.264, H.265(optional), providing premium HD video calls with 1080P high resolution
- Support visual call and remote door opening
- Built-in 2W speaker and AEC to achieve high-quality hands-free call
- Support optional wireless buttons (Fanvil KT 1x/2x/3x Series) for remote one-click calls
- Built-in 2.4GHz/5GHz Wi-Fi
- 8 alarm input interfaces and 1 embedded relay, which support to connect the external fire/gas alarm for improving residential safety
- Wall-mounted installation, PoE integrated

i506W SIP Indoor Station



- 10.1 inch 1280× 800 capacitive color touch screen
- Support video codec H.264, H.265(optional), providing premium HD video calls with 1080P high resolution
- Support visual call and remote door opening
- Built-in 2W speaker and AEC to achieve high-quality hands-free call
- Support optional wireless buttons (Fanvil KT 1x/2x/3x Series) for remote one-click calls
- Built-in 2.4GHz/5GHz Wi-Fi
- 8 alarm input interfaces and 1 embedded relay, which support to connect the external fire/gas alarm for improving residential safety
- Wall-mounted installation, PoE integrated

i505/i505W Android Indoor Station



- 7 inch 1024× 600 capacitive color touch screen
- Android 9.0 operating system, meeting the customization needs of industrial applications and secondary development
- Support video codec H.264, H.265(optional), providing premium HD video calls with 1080P high resolution
- Support visual call and remote door opening
- Built-in 2W speaker and AEC to achieve high-quality hands-free call
- i505W supports 2.4GHz/5GHz Wi-Fi
- 8 alarm input interfaces and 1 embedded relay, which support to connect the external fire/gas alarm for improving residential safety
- Wall-mounted installation, PoE integrated

i504/i504W SIP Indoor Station



- 7 inch 1024× 600 capacitive color touch screen
- Support video codec H.264, H.265(optional), providing premium HD video calls with 1080P high resolution
- Support visual call and remote door opening
- Built-in 2W speaker and AEC to achieve high-quality hands-free call
- i504W supports 2.4GHz/5GHz Wi-Fi
- 8 alarm input interfaces and 1 embedded relay, which support to connect the external fire/gas alarm for improving residential safety
- Wall-mounted installation, PoE integrated

i57A SIP Indoor Station



- 10.1-inch 1280×800 capacitive color touch screen
- Android 9.0 operating system, meeting the customization needs of industry applications and secondary development
- Aluminum panel design, reliable and durable
- Built-in cool lighting effects, which can be set as status indicators
- Check real-time video of door phones with H.264 video codec and 1080P high resolution
- HD voice speech quality with built-in 2W speaker and Acoustic Echo Canceller
- Built-in Bluetooth 5.0 and 2.4GHz/5G Wi-Fi
- Support RS-485, 8 alarm input interfaces and 2 embedded relays
- Integrated Micro USB interface and maximum 256GB capacity TF card slot
- Wall-mounted installation, PoE integrated

i55A SIP Indoor Station



- 7-inch 1024×600 capacitive color touch screen
- Android 9.0 operating system, meeting the customization needs of industry applications and secondary development
- Five physical buttons, reliable and durable
- Check real-time video of door phones with H.264 video codec and 1080P high resolution
- HD voice speech quality with built-in 2W speaker and Acoustic Echo Canceller
- Built-in Bluetooth 5.0 and 2.4GHz/5G Wi-Fi
- Support RS-485, 8 alarm input interfaces and 2 embedded relays
- Wall-mounted installation, PoE integrated

Console IP Phone

Equipped with a gooseneck microphone, Fanvil visual paging console phone has powerful functions. Compatible with the standard SIP protocol, it enables intelligent programmable keys and supports hands-free call. It is used as a monitoring center or host for office manager to meet the needs in medium and small scenario dispatching management. It improves the management efficiency and emergency response capabilities.



A320i Android Touch Screen Console IP Phone

Level up Communication Efficiency



Highlights

HD Audio/Video Call

It supports wideband audio codec G.722 and Opus and video codec H.264 1080P, providing users with premium quality HD audio/video experience

Precision Voice Pickup

Equipped with a gooseneck microphone, it allows users to adjust angle as needed to capture sound from a specific direction, ensuring clarity and accuracy of the audio

Built-in Adjustable Camera

Built-in 8 Mega-pixel camera with a camera lens cover for privacy protection. Users can also adjust the camera angle to meet different needs

Android 9.0 OS

It ensures stable operation of product and software, with good compatibility and functional extensibility, and support installation and use of third-party Android applications

Business Aesthetic Design

Business aesthetic design, crystal-clear color screen, user-friendly UI interface

Fanvil Broadcast System

With Fanvil broadcast system, it is stable and extensible and can achieve rich and flexible broadcast application and system management

A320i Android Console IP Phone



- 10.1-inch touch screen, easy for operation
- Full duplex call supported, speaker up to 92dB
- Gooseneck microphone presents sound with good reproduction
- 20 SIP Lines
- Support 10-way audio conferencing and 3-way video conferencing
- Built-in adjustable 8 mega-pixel camera with a privacy cover
- Equipped with PTM handset, standard/PTT handset is optional
- Support Android 9.0 OS for the installation of third-party Android application
- Up to 116 DSS keys DIY configuration, with each DSS key set as Line/BLF/speech dial etc.
- Built-in Fanvil broadcast system can achieve rich and flexible broadcast application and management
- Support HD audio with G.722 and Opus
- Support video codec H.264, providing premium HD video calls
- Built in 2.4G/5G Wi-Fi and Bluetooth 5.0
- Dual Gigabit ports, Integrated PoE

A308i Android Console IP Phone



- 7-inch touch screen, easy for operation
- Full duplex call supported, speaker up to 90dB
- Gooseneck microphone presents sound with good reproduction
- 20 SIP Lines
- Support 10-way audio conferencing and 3-way video conferencing
- Built-in adjustable 5 mega-pixel camera
- Support Android 9.0 OS for the installation of third-party Android application
- Up to 116 DSS keys DIY configuration, with each DSS key set as Line/BLF/speech dial etc
- Support HD audio with G.722 and Opus
- Support video codec H.264, providing premium HD video calls
- Built in 2.4G/5G Wi-Fi
- Dual Gigabit ports, Integrated PoE

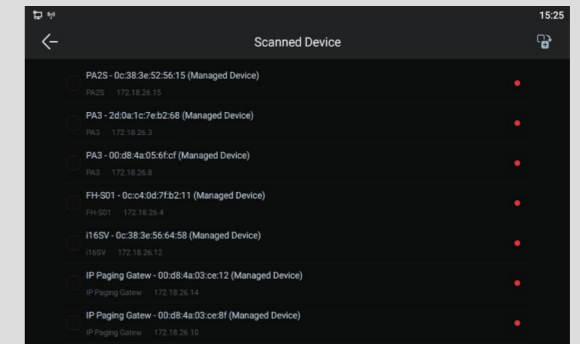
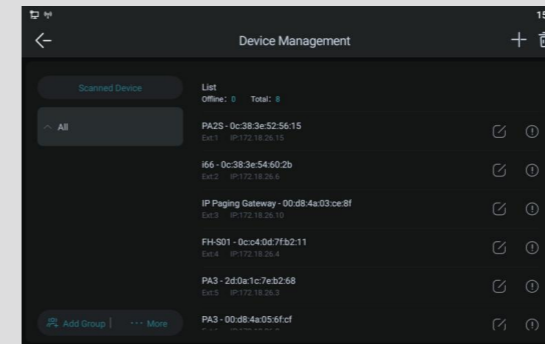
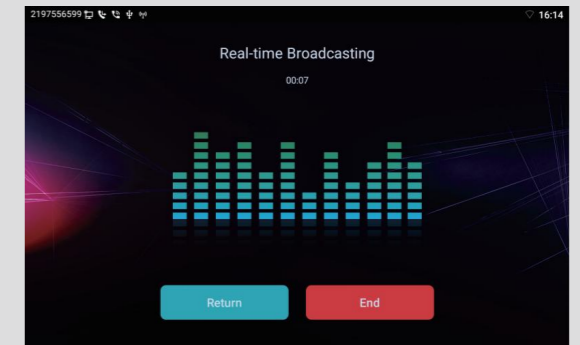
X210i Console IP Phone



- 4.3 inch color screen, 2x3.5 inch side color screens
- Gooseneck microphone presents sound with good reproduction
- Up to 106 DSS keys provided for easy and quick feature customization such as BLF speed dial, group broadcasting etc.
- Provide premium HD audio with wideband audio codec G.722 & Opus
- 20 SIP lines
- Built-in Bluetooth 4.2. It supports Bluetooth headset and EHS headset
- Easy to connect Wi-Fi via WiFi Dongle
- Be able to receive video calls with video codec H.264
- Dual Gigabit ports, Integrated PoE

Fanvil Serverless Public Address System

Fanvil Serverless Public Address System can independently operate as a small-scale broadcasting platform, managing 50 IP terminals. It's ideal for schools, supermarkets, and other small and medium-sized projects. With plug-and-play support, it swiftly discovers and manages devices, allowing users to set up a serverless broadcasting system without additional third-party servers or platforms. Integrated with features like real-time, scheduled, and emergency broadcasting, calls, and monitoring, it meets various needs across different scenarios.



Highlights

Plug and Play

It automatically discovers and manages IP terminals under the same LAN, simplifying deployment processes and saving time and costs

Integrate Rich Features

Support rich functions such as real-time broadcasting, scheduled broadcasting, emergency broadcasting, calls, monitoring, etc., meeting the simple project requirements in small and medium scenarios

Graphic User Interface

With user-friendly operation and graphical interface, user can easily understand without complicated learning

Independent Operation

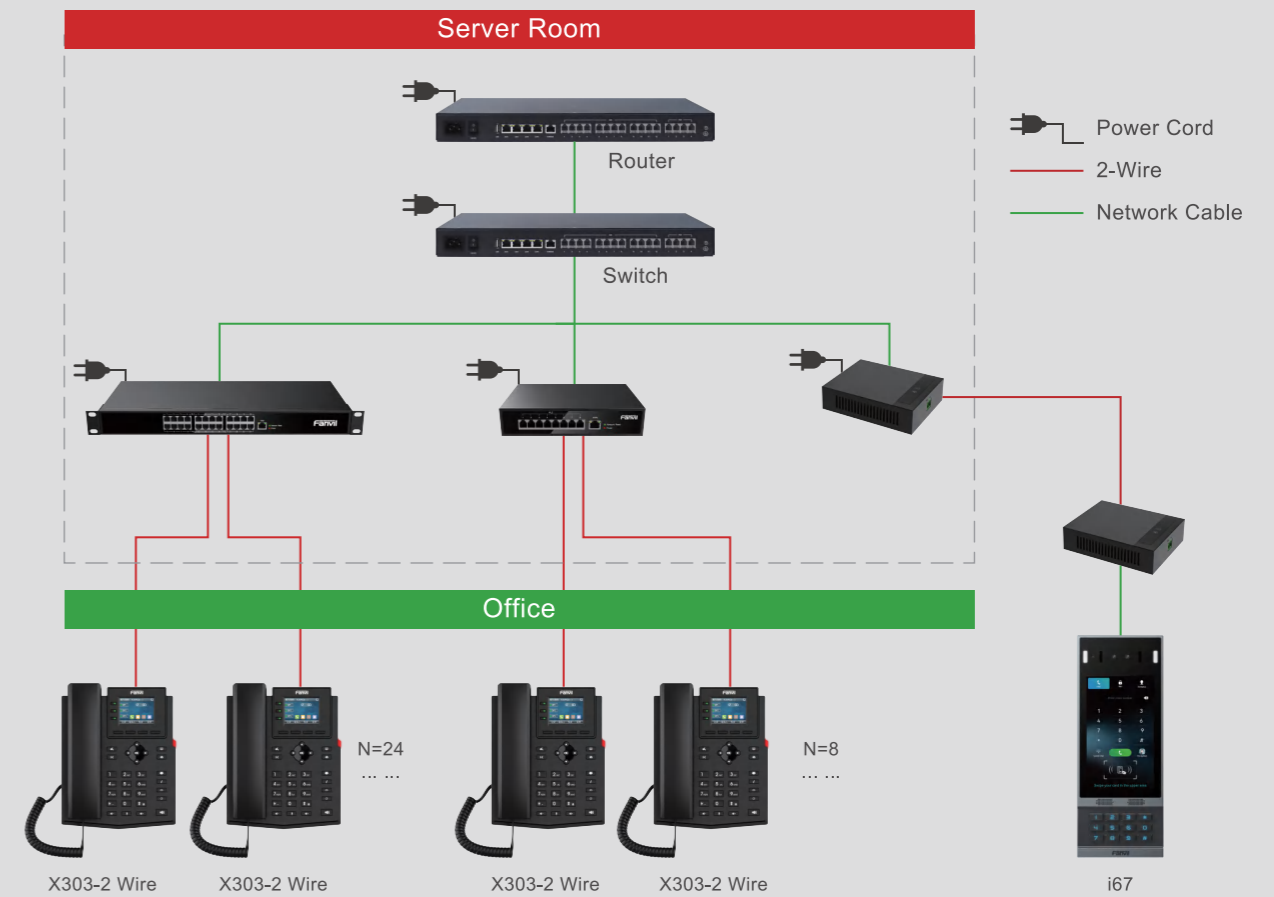
Capable of independently managing 50 IP terminals without the need for server or platform software, saving on investment costs

2-Wire Products

The 2-wire solution enables data and power transmission over existing cables, reducing deployment costs for renovation projects. It supports plug-and-play devices, significantly simplifying the installation process. This technology ensures stable signal transmission, offering an efficient and economical option for the intelligent retrofitting of old buildings.

Enterprise Office Solution

Cost Savings and Enhanced Efficiency



Highlights

Lower Costs

It can transmit data and power through existing 2-wire cables, greatly cutting down on new wiring requirements and deployment costs.

Plug and Play

Supply power and network without the need for complex configurations, enabling swift deployment and immediate use of devices.

Ethernet Cable Cascading

Cascading with Ethernet cables ensures stable network transmission and enhances user experience.

Integrated Cloud Management

It can be integrated into cloud management / conference systems, facilitating management and user-friendly operation.

Flexible Networking

Multiple gateway options with various interfaces to avoid interface wastage.

Compatible with Multiple Devices

Devices with standard RJ45 interfaces can be networked through PN1, allowing for flexible selection.



PN24 2-Wire PoE Switch

- Up to 24 2-wire devices can be connected
- The 2-wire power and network supply modes can be switched
- Data transmission is stable through Ethernet cable cascading
- Maximum connection distance: 300m for power and network supply
- Conforms to the standard 1U chassis design, making installation and deployment convenient
- Built-in power supply, AC100~240V wide voltage input



PN8 2-Wire PoE Switch

- Up to 8 2-wire devices can be connected
- The 2-wire power and network supply modes can be switched
- Data transmission is stable through Ethernet cable cascading
- Maximum connection distance: 300m for power and network supply
- Built-in power supply, AC100~240V wide voltage input



PN1 2-Wire Converter

- Single-port conversion gateway, compatible with PN24 and PN8
- Supply power and network via 2-wire
- Maximum transmission distance: up to 1600m (network supply only)
- External power supply, AC100~240V wide voltage input



X303-2 Wire IP Phone

- Support 2-wire power and network supply
- 2.4-inch color screen
- HD audio with wideband audio codec G.722 & Opus
- Desktop installation: 45° and 50°

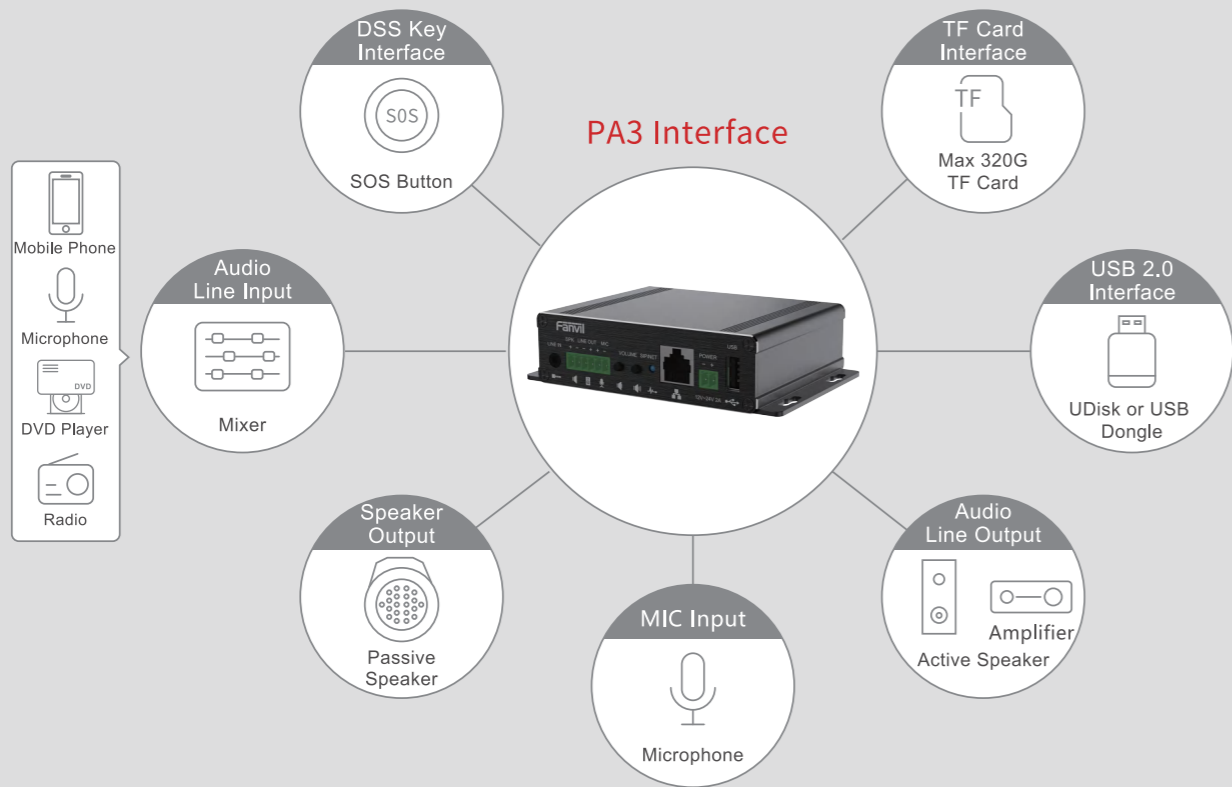
Audio/Video Gateway & Paging

Small and stylish, with HD-audio and function-rich interfaces, it is used for real-time and fix-time MP3 broadcasting, one-touch intercom and video linkage when connecting to the external devices.



PA3 SIP Paging Gateway

Rich Interfaces, Wide Application Scenarios



Highlights

Perfect for Commercial Devices

Small and stylish, it is easily and flexibly installed in other industrial devices

HD Audio for Public Broadcasting

With wideband audio codec G.722/Opus/MP3, it brings the users a crystal-clear telecom auditory experience

Rich Interfaces

A variety of interfaces enable you to quickly customize your broadcasting, amplification and intercom solution, to suit a wide range of applications

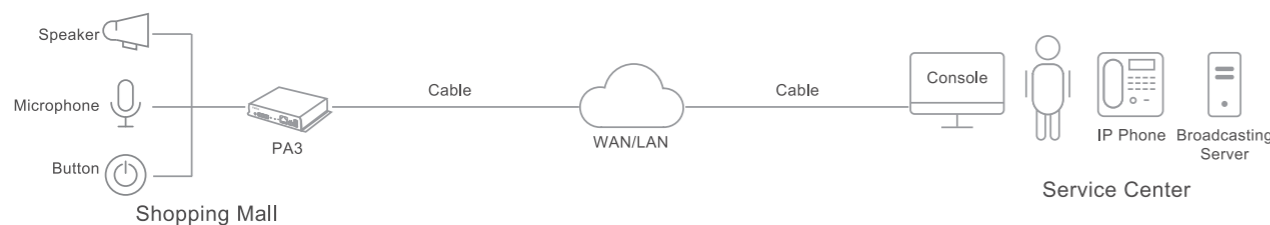
Video Linkage with IP Camera

With IP camera, it achieves audio/video call with the video phone and view the HD video image of the camera

Standard Network Communication Protocol

Based on SIP standard communication protocol. It can be deployed in both LAN and WAN

Diagram



Audio/Video Gateway & Paging

PA3 SIP Paging Gateway



- Small and stylish, it can be installed in other devices
- SOS call key interface, one-click call
- Line in audio input interface, 3.5mm standard audio interface, plug-and-play
- Line out audio output interface, it is extended to external active speaker interface
- Support offline audio playback, USB 2.0 interface and TF card slot for more data storage
- 10W-30W mono audio power output, can adapt output power by input voltage
- Megabit Ethernet and PoE

PA2S SIP Intercom & Paging Gateway



- Small and stylish, it can be installed in other devices
- SOS call key interface, one-click call
- Camera NVR recording, standard RJ45 interface
- Recording output, 3.5mm standard audio interface, plug-and-play
- Line out audio output interface, it is extended to external active speaker interface
- 10W-30W mono audio power output, can adapt output power by input voltage
- Support 1 short circuit input and 1 short circuit output interface
- Megabit Ethernet and PoE

SIP PA2-KIT



- High reliability components, plug and play
- 720P camera module to achieve HD video call; The lens mounting height and Angle can be adjusted to meet the requirements of various scenarios
- High sensitivity pick up, waterproof, dustproof designed microphone module, suitable for harsh environment application
- 5W/8Ω speaker module, satisfied the noisy environment to the demand of the high loudness of the intercom equipment
- Waterproof and dustproof designed stainless steel button with LED indicator for better operation
- Available for PA2/PA2S SIP paging gateway

SIP Speaker

2 Way Coaxial Speaker with Talkback



SIP Speaker

FH-S01 SIP Ceiling Speaker



- All in one functionality with audio codec, digital amplifier, and speaker
- High-intelligibility performance with G.722&Opus codecs
- Support up to 10 multicast zones with prioritization
- Audio power up to 20W (DC power supply) with built-in class D amplifier
- Support talkback with a built-in microphone
- Customize the WAV file for emergency notification and alarm
- Linkage with security alarming devices
- Support remote configuration via a web page and auto-provisioning
- 10/100 Mbps Ethernet, Integrated PoE

A212 SIP Wall-mounted Speaker



- All-in-one SIP speaker, integrate passive speaker, amplifier circuit and digital signal processor, no need for analog amplifier
- HD sound quality with G.722 & Opus audio codecs, sampling rate up to 44.1K Hz
- Drive analog passive speaker supported
- Support up to 10 multicast zones with prioritization
- Audio power up to 15W (DC power supply) with built-in class D amplifier
- Equip with built-in microphones, supporting talkback function, self-test, listening, environmental noise detection
- Customize alarm action for emergency warning
- Connect with external knob to adjust volume
- Ring group supported
- Wall mounted installation (Optional angle adjustment bracket)
- Support remote configuration via a web page and auto-provisioning
- 10/100 Mbps Ethernet, Integrated PoE

Highlights

2 Way Coaxial Speaker

Features a 2-way coaxial setup with a robust LF Woofer and a crisp HF Tweeter, it delivers HD sound quality within a wide frequency response range

Talkback with Built-in Microphone

Built-in omnidirectional microphone, support talkback that enables users to talk with the caller directly.

All in One Functionality

Integrated coaxial-driver, built-in digital signal processor and digital amplifier, plug-and-play when connecting to PoE

Emergency Notification Alerting

Integrated with relay in & out interface, it provides a flexible connection to alarm device like PIR sensor, infrared sensor, strobe light, etc.

HD High-intelligibility Performance

Support MP3 broadcasting with a sampling rate of 44.1KHz; With up to 20W audio power, it delivers crystal clear sound at a distant range

Multicasting Functionality

Support 10 multicast zones with prioritization, which can be set on the WEB page for paging

Business Conferencing

Fanvil business conferencing is a teleconference assistant for offices with stylish design and powerful functionalities like 360° omnidirectional voice pickup and noise reduction. It effectively solves the problem of unclear voice in remote calls and noisy conference environments, enabling users to enjoy a clear, stable, and smooth remote meeting experience anytime and anywhere.



HIGHLIGHTS

CS40 Conferencing Speakerphone

Visible Light Bar

The light bar changing colors to indicate device status, enhancing the overall user experience.

Flexible Connectivity

Connect via USB A/C cable for plug-and-play convenience, or pair via Bluetooth for wireless use.



Immerse Yourself in Every Conversation

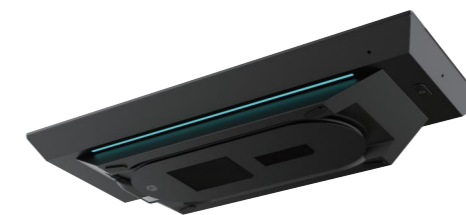
With trio microphones and dual 5W speakers, complemented by advanced Environmental Noise Cancellation (ENC), it guarantees crystal-clear voice transmission.

Large Capacity Battery for Long-term Use

Continuous and stable audio output ensures smooth and uninterrupted meetings.

Integrated Cable Management

No more lost or tangled cables, keeping your desktops tidy.



Elegant Design

Modern industrial design with fabric speaker cover and ambient light fits all kind of meeting room

CS40 Conferencing Speakerphone



- Dual 5W loud speakers for medium meeting rooms
- Flexible connectivity via USB A/C or Bluetooth pairing
- Three Omnidirectional Microphones, 3m voice pickup range
- Support Automatic Gain Control (AGC) and Environmental Noise Cancellation (ENC) for clear and natural call quality
- Visible light bar indicates your work status
- Up to 10 hours' talk time
- Integrated cable management prevents cable loss or tangles
- Compatible with mainstream communication platforms

CS30 Speakerphone



- 360°omnidirectional voice pickup with a radius of 3 meters and built-in 4-Mic array
- Compact and portable design for meetings anywhere and anytime
- Multiple connection methods via NFC, Bluetooth and USB
- Separate design of Microphone and speaker to eliminate echo and whistling
- Automatic precise restoration of human voice to ensure the meeting quality
- Efficiently reduce 99% of the background noise
- Automatic voice tracking for speakers
- Long-duration time of 8 hours
- Widely compatible with mainstream conferencing software

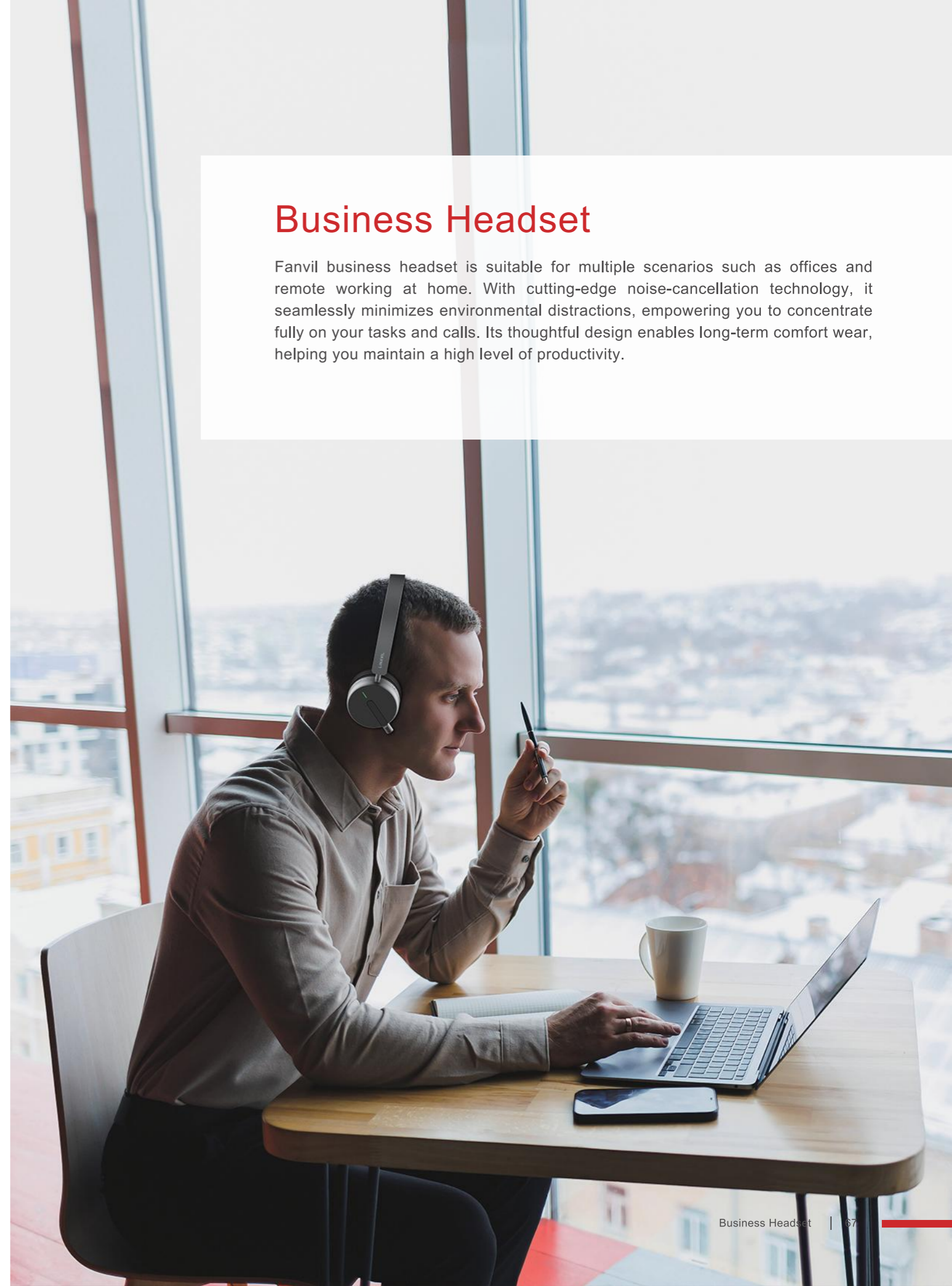
CS20 Portable Speakerphone



- Speakerphone for small meeting rooms, huddle rooms or personal use
- The compact and lightweight design makes it easy to carry around, allowing you to start meetings anytime, anywhere
- Flexible connectivity with USB-A/C and Bluetooth 5.4
- 3W speaker, trio-omnidirectional mic with 1.5-meter voice pickup range
- Support Automatic Gain Control (AGC) and Environmental Noise Cancellation (ENC)
- Large battery capacity for over 10-hour talk time

Business Headset

Fanvil business headset is suitable for multiple scenarios such as offices and remote working at home. With cutting-edge noise-cancellation technology, it seamlessly minimizes environmental distractions, empowering you to concentrate fully on your tasks and calls. Its thoughtful design enables long-term comfort wear, helping you maintain a high level of productivity.



HIGHLIGHTS

DH50-B Bluetooth Headset

Retractable Hidden Microphone Boom

Pull out to answer calls, push back for automatic mute. Enhancing user experience by providing more convenient call control.

Immersive in Rich Audio

Vocal enhanced microphone and speaker with ENC technology provides high quality sound.

All-Day Comfort Wear

Designed with soft leatherette ear cushions, comfortable enough for long conference calls.

Dual Busylights

The dual-side indicator lights indicate your work status, reducing unnecessary interruptions and enhancing work efficiency.



Intuitive Volume Control

Adjusting the volume with the volume wheel, no need to find or repeatedly press the volume keys.

Business Headset

DH50-B Bluetooth Headset



- Adjustable padded headband and leatherette ear pad with cushions for all-day comfort
- Built-in bluetooth 5.4 for seamlessly switch between PC and smartphone with a operating range of up to 30 meters
- Ready for 20 hours talk time and 35 hours music time
- Vocal enhanced retractable microphone and speaker with noise cancellation
- Online indicator lights indicate your work status to avoid interruption
- Ease-of-use volume wheel to adjust the voice level
- Providing a bluetooth dongle and a drawstring bag for easy portability
- Compatible with mainstream communication platforms

DH50-U USB Headset



- Plug and play, connect quickly and easily
- Soft leather ear cushions, perfect for all-day wear without pressure
- Dual microphones for precise voice pickup
- Support Environmental Noise Cancellation (ENC) for high-quality voice
- Retractable hidden microphone boom and inline control design for easy operation
- Dual-side indicator lights indicate your work status
- Ease-of-use volume wheel to adjust the voice level

HT301 Series/HT302 Series Wired Headset



HT302U



HT301U



HT302 RJ9 Headset



HT301 RJ9 Headset

- Support Environmental Noise Cancellation Technology to reduce the background noise
- Support wideband HD audio, designed for the calling and music
- Ergonomic design with soft leather ear cushions and ultra-lightweight
- 260° bendable boom arm allows users to wear according to their preference
- Compatible with all Fanvil IP phones and PC devices with USB interface

FDPS and FDMS

FDPS(Fanvil Distributed Provisioning Service)



- Auto Provision
- High Security Level
- Local and RPC Remote Management

Application

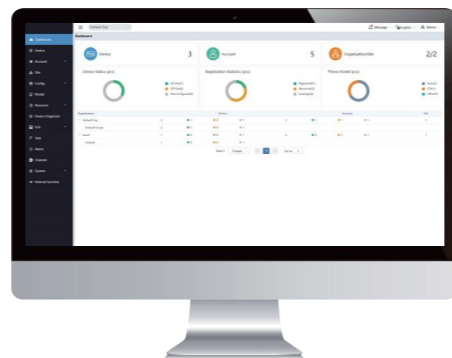
- Fanvil Distributed Provisioning Service (FDPS) is a free provision tool for Fanvil Agents, distributors, and resellers to save cost and time on auto-provision features

Features

- Support web GUI management, also remote management via FDPS RPC
- FDPS works as plug and play when Fanvil devices access to internet after first power on or after reset
- Easy to achieve auto provisioning for Fanvi devices. Just a simple file download server is needed, such as http/https/ftp/tftp server, no need to build a professional provisioning environment
- Devices' firmware could be managed and provisioned more easily. No need to arrange different kind of firmware files for different customers during production, nor maintenance (upgrading firmware) manually and locally
- High security level. FDPS supports HTTP/HTTPS with encrypted connection; and authentication check for connecting devices
- The customized provisioning settings could be re-downloaded via FDPS even the device configs are reset by mistake
- Free of charge (The customer's config file download server is not included)

FDMS (Fanvil Device Management Solution)

- Auto-Provisioning
- Remote Management and Maintenance
- Stable System with High Security



Application

- Fanvil Device Management Solution (FDMS) provides users with a quick and easy-to-use tool for remote deployment and management of devices, improving the installation efficiency and saving maintenance time and cost.

Features

- Cloud Deployment / Local Server Deployment: Cloud deployment and local server deployment are available. Users can use it directly on the web and don't need to download the software, reducing the complexity of procedures
- Remote Deployment and Management: Integrated functions of equipment management, account registration, configuration upgrade, firmware upgrade, device diagnosis, order management, statistical analysis
- Auto-Provisioning: Achieve the online configuration and management of devices in batches via different sites and models
- Online Maintenance: Multi-party information alarm for abnormal situations and timely online maintenance to improve management efficiency
- High Security: Guarantee the security of user data with TLS certificate verification and mutual certificate verification

Accessories

USB Bluetooth Adapter BT20



EHS Switch Adapter EHS20



USB Wi-Fi Adapter WF20



KT10 & KT20 & KT30 Wireless Buttons

