

# VOICE PAGING AND EMERGENCY NOTIFICATION IN SCHOOLS

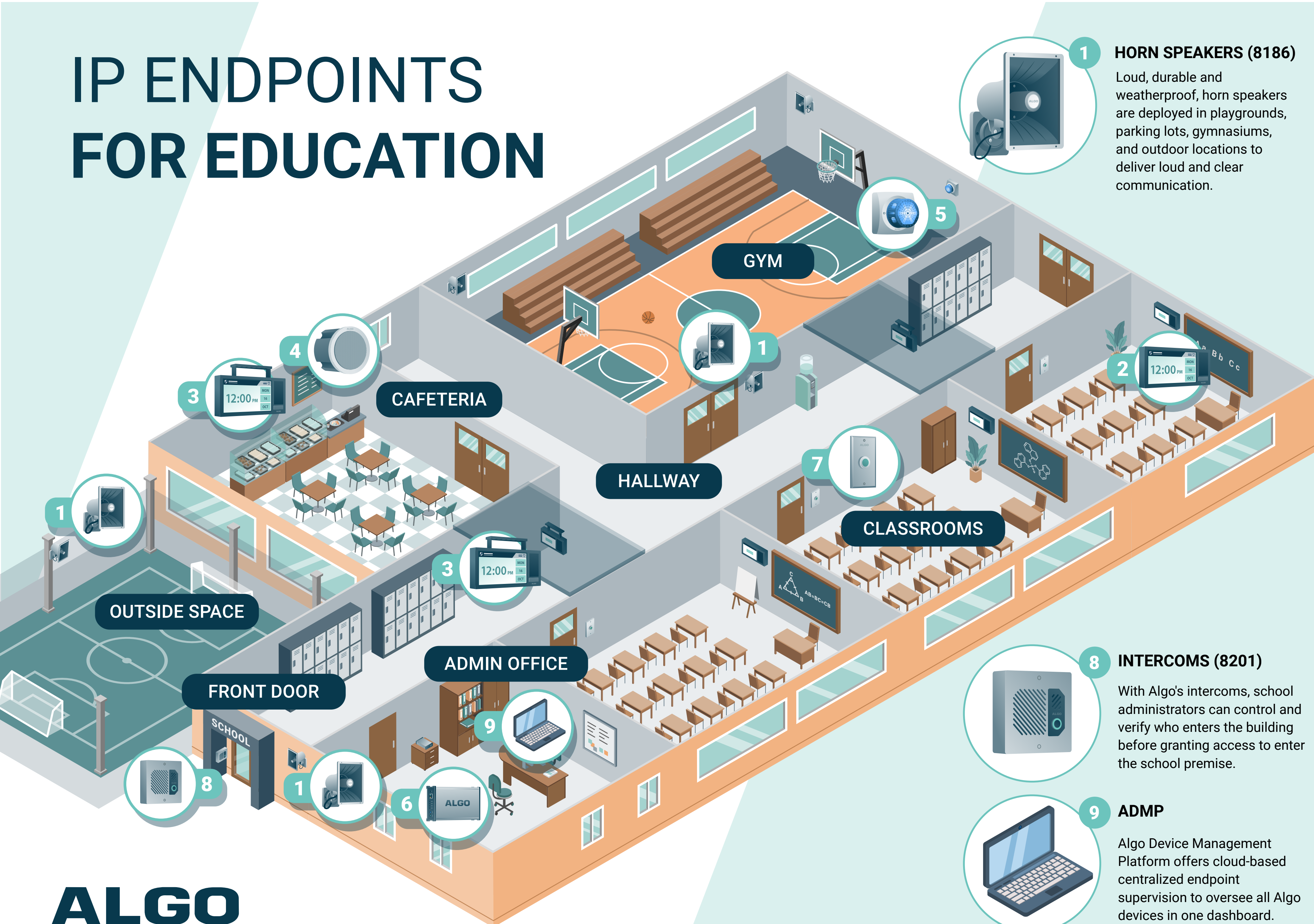
Algo IP endpoints form an integrated communications ecosystem for education environments, offering voice paging, emergency alerting, and secure door entry to K-12 and higher education facilities. Schools can easily broadcast daily announcements, pre-recorded messages, bell tones, and essential notifications such as emergencies, lockdowns, and weather alerts.

Algo's portfolio includes IP speakers, paging adapters, displays, visual alerters, and intercoms, equipped with a rich feature set. Algo's SIP and multicast-capable endpoints ensure clear audio and highly visible visual notifications across every corner of the school or campus. Incorporating two-way talk and ambient noise detection enhances communication between teachers and staff, ensuring that pages and alerts are promptly heard in classrooms, gymnasiums, hallways, cafeterias, and outdoor areas.





# IP ENDPOINTS FOR EDUCATION



## 1 HORN SPEAKERS (8186)

Loud, durable and weatherproof, horn speakers are deployed in playgrounds, parking lots, gymnasiums, and outdoor locations to deliver loud and clear communication.

## 2 DISPLAY SPEAKERS (8410)

Algo's Display Speakers bring attention-grabbing visual and audible communication in a single device for voice paging and notifications in classrooms.

## 3 DISPLAY SPEAKERS (8420)

Designed to deliver highly notable visual alerting in multiple directions, this device offers ideal audible and visual notification in hallways or large open spaces.

## 4 CEILING SPEAKERS (8188)

Ceiling speakers provide crisp and clear communication with even sound distribution, ensuring that announcements can be heard clearly by all students and staff.

## 5 VISUAL ALERTERS (8138)

Signal different events with visual communication, whether it be emergencies or daily messaging, visual alerters ensure that students and teachers receive critical alerts.

## 8 INTERCOMS (8201)

With Algo's intercoms, school administrators can control and verify who enters the building before granting access to enter the school premise.

## 6 PAGING ADAPTERS (8301)

Integrate analog PA systems into IP environments. Paging adapters enhance communication with an embedded scheduler for bells and announcements.

## 9 ADMP

Algo Device Management Platform offers cloud-based centralized endpoint supervision to oversee all Algo devices in one dashboard.

## 7 CALL BUTTONS (1203)

Utilized to report safety concerns within the school premises, call buttons quickly and easily initiate calls in case of emergencies and security threats.